

# Elm Street Utility and Road Improvements Project

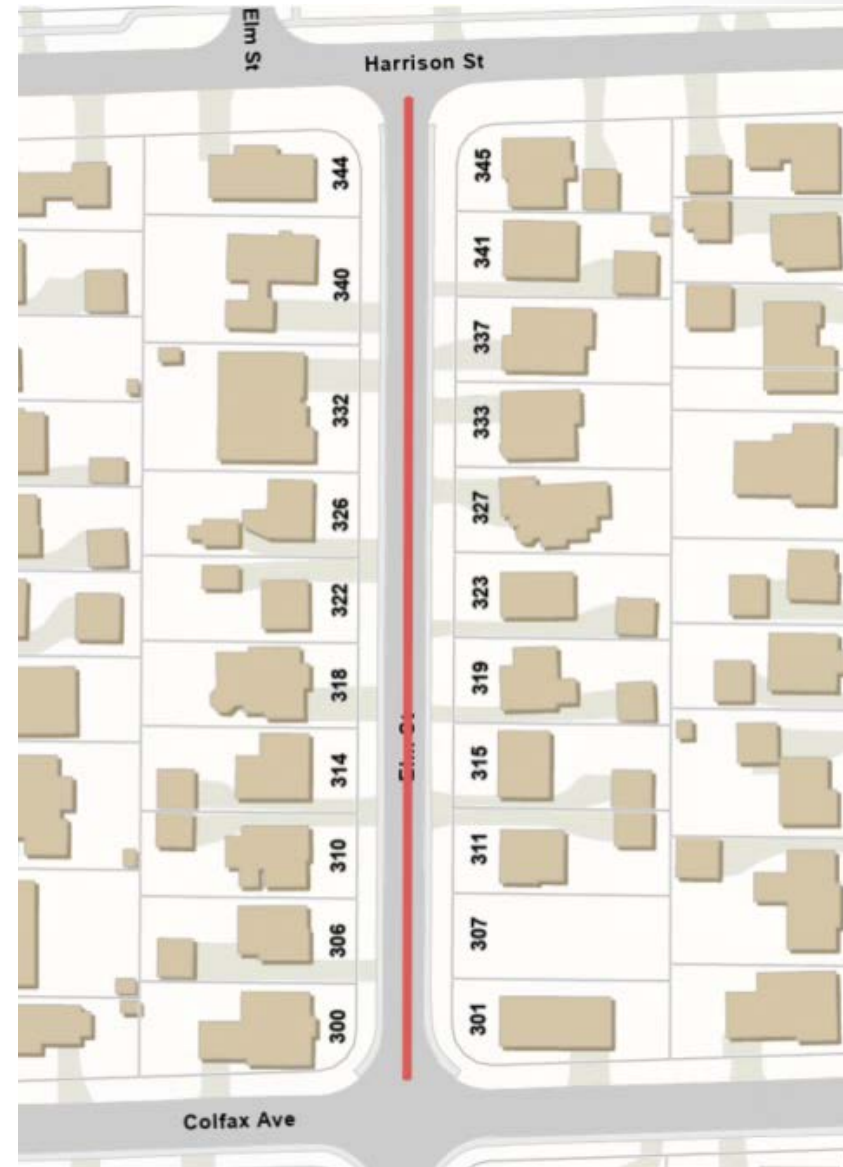
## Welcome!

Resident Pre-Construction Meeting  
March 20, 2024  
7:00 PM



# Project Location and Limits

- Elm Street: From Harrison Street to Colfax Avenue
- Total Project Length – 610 feet Approximately
- All work to be completed within the public right-of-way
- Construction year: 2024



# Scope of Work and Benefit to Residents

- Replacement of existing **water main** with new **8-inch diameter water main**, including new **1 ½ -inch water services and new b-boxes**
- Upgrade of existing **storm sewer system**
- **Reconstructing** the street with asphalt.
- **Sidewalk and Curb and Gutter** removal and replacement
- **Parkway restoration** with sod

# Existing and Proposed Typical Plans

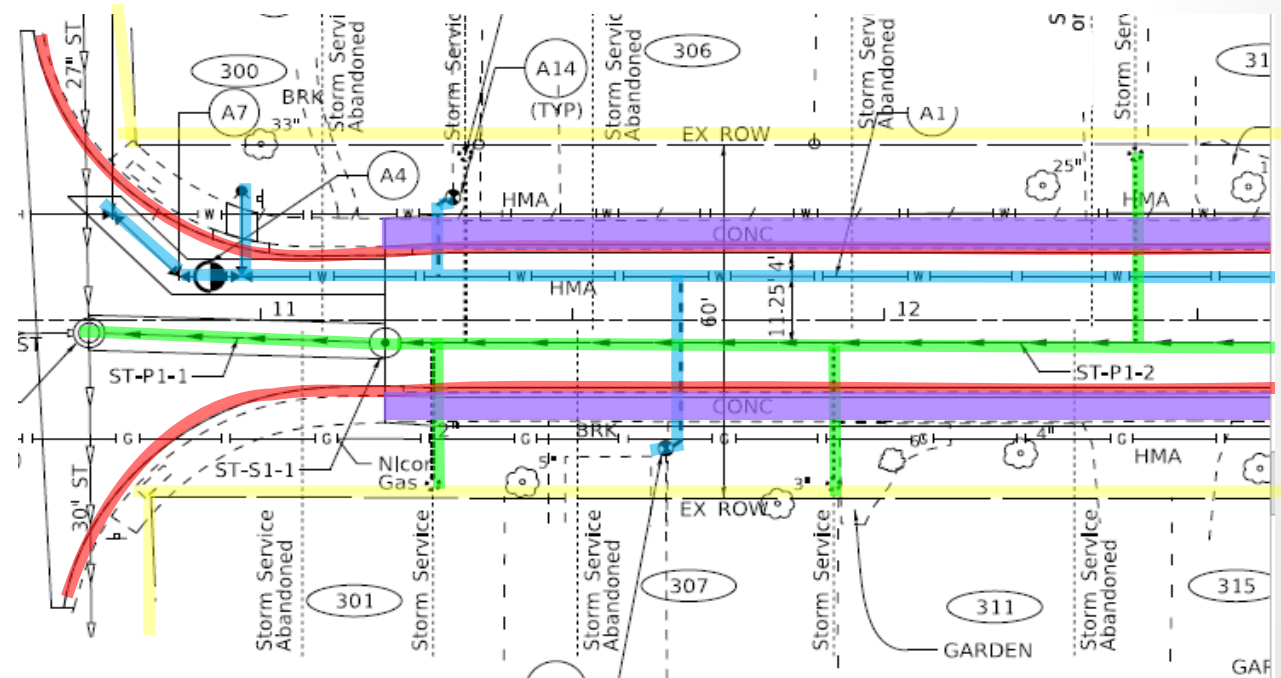
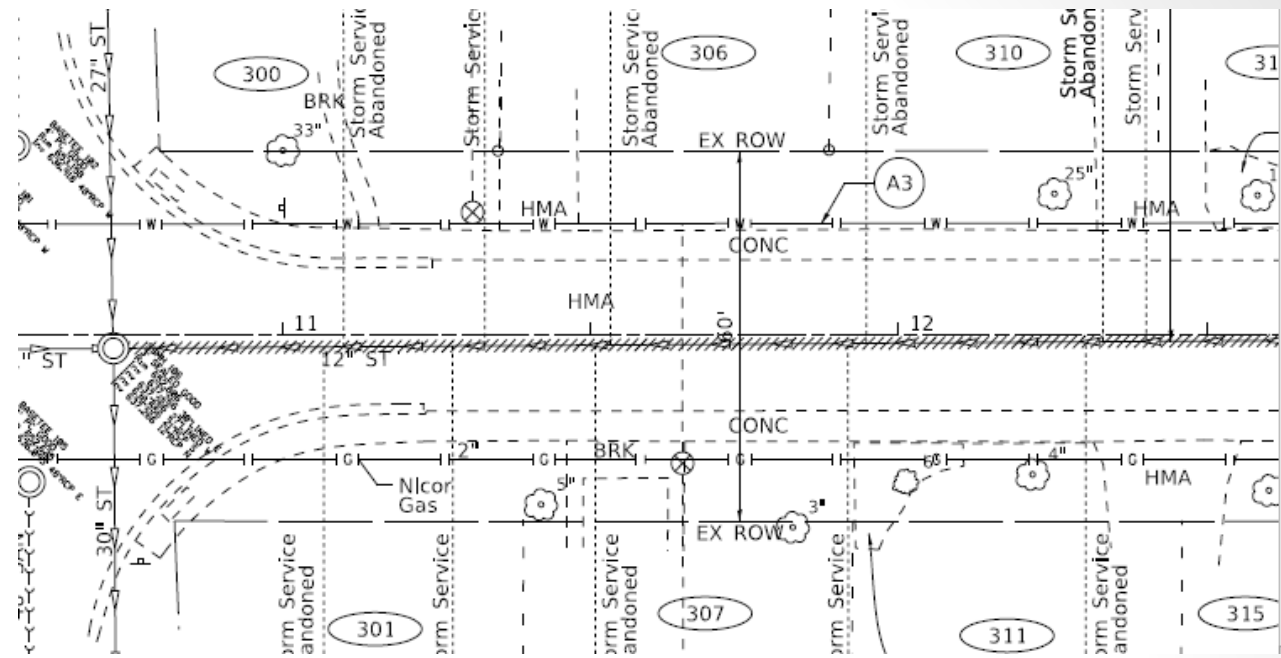
R&R Concrete Sidewalk

Village ROW

Curb & Gutter Replacement

New Water Main

New Storm Sewer



# Tentative Construction Schedule

Construction Activity	Duration	Completion Time
Pre –Construction meeting		Today – March 20, 2024
Anticipated start date		May 6, 2024
Water main replacement	2 to 3 weeks	Mid to Late May
Water and sewer service installation	2 to 3 weeks	Early to Mid June
Storm sewer installation	2 to 3 weeks	Mid to Late June
Pavement removal and start road subgrade	1 to 2 weeks	Late June
First Layer of Asphalt paving	1 to 2 days	Early July
Landscape restoration	1 to 2 week	Mid to Late July
Final Layer of Asphalt paving	1 to 2 days	Late July
Anticipated completion date	Late July	

# Lead Service Line Program Information

## Link to Village Website on Lead Services

<https://www.glenview.il.us/Pages/LeadServices.aspxLead>

## Lead Service Informational Brochure

[https://www.glenview.il.us/Documents/LSLR%20Glenview%20Brochure\\_.pdf](https://www.glenview.il.us/Documents/LSLR%20Glenview%20Brochure_.pdf)

### WHAT IS A LEAD SERVICE LINE INVENTORY?

Glenview is committed to meeting the requirements of the Illinois Lead Service Line Replacement and Notification Act. As a part of the requirements, the Village is conducting a service line material inventory; identifying buildings and houses that may have lead service lines. If you believe you have a lead service line, please contact Glenview's Resolution Center.

### WHERE DOES MY WATER COME FROM?

Glenview receives their water from the Village of Wilmette. **Lead is NOT present in Wilmette's source water (Lake Michigan), nor is lead in Wilmette's treated drinking water.** The Village purifies and delivers safe, clean drinking water daily and when the water leaves the Village's water treatment plant, there is no detectable lead in it.

You receive your treated water through a water service line. The water service line runs from the public water main into homes. The Village owns the service line up to the property line; from the property line into the home is the homeowner's responsibility. Replacing the entire lead service line is therefore a shared responsibility between the Village and each customer. A full lead service line replacement can be done in one day.



## CONTACT US

### Village of Glenview Resolution Center

2500 East Lake Avenue  
Glenview, IL 60026  
Monday through Friday  
8:30 a.m. to 4:30 p.m.  
(847) 724-1700

For Public Works emergencies outside of these hours, call the Village of Glenview Police Department at:  
(847) 729-5000

To stay up to date with the Village's Lead Service Line Inventory and Replacement Program, visit:

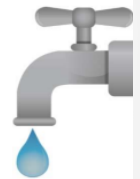
[www.glenview.il.us/leadservices](http://www.glenview.il.us/leadservices)



Stay connected with Glenview!



The Village of  
**Glenview**



## LEAD SERVICE LINE INVENTORY AND REPLACEMENT PROGRAM

**GET THE LEAD OUT!**



# Lead Service Cost-Share Program



- If your water service line is found to be lead, you will be notified within 24 hours
- With the construction project your public service line will be replaced at no cost to you
- Village will pay 50% of the cost of replacing your private service line
- If your current water meter needs to be replaced with the work of replacing your lead service line the Village will pay 100% of the cost

# Resident's FAQ's

## If my driveway is damaged, will it be fixed or replaced?

- Sections of private driveways located in the public right-of-way will be replaced if damaged during construction with the exception of edging materials and brick paver driveways. Reimbursement are available for reinstallation of brick pavers with the driveway apron located in the public right-of-way.

## Will my driveway be closed during construction?

- Private drives will be accessible the majority of the time during construction. If your driveway needs to be closed, notice will be provided to allow adequate time to make arrangements.

## Will the parkway be restored after construction is completed?

- Parkway areas disturbed by construction will be restored with sod during the last stage of construction. Please note that residents are responsible for the removal of private items located within the public parkway such as landscaping features, fencing, boulders, sprinklers, planters, etc. These items will not be replaced if damaged.

## Will garbage pick up or bus pickup & drop off be impacted?

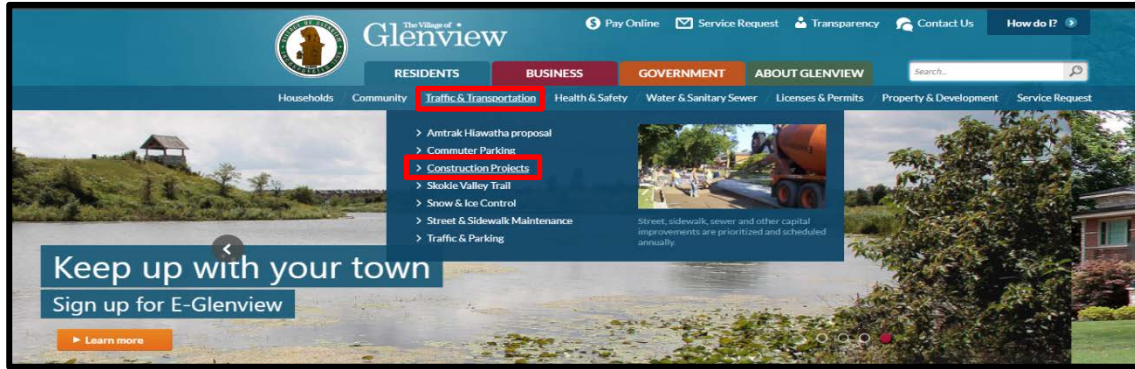
- The garbage service in your neighborhood will not be impacted during construction.
- Before bus routes are impacted, the school, bus company, and residents will be notified in advance of any alternate bus pick up and drop off.



# Project Updates

1. Navigate to <https://www.glenview.il.us/Pages/Default.aspx>

2. Select Traffic & Transportation > Construction Projects

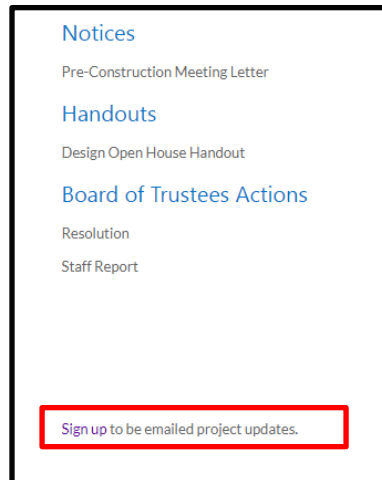
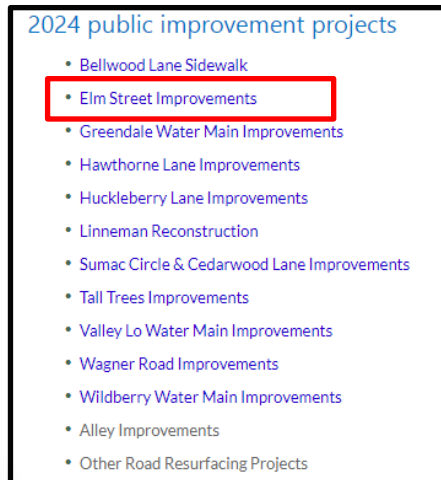


<https://www.glenview.il.us/Pages/24Elm.aspx>

- Sign up to receive weekly updates at the link listed above
- Keep your eyes open for hand-delivered letters and door hangers throughout the project

3. Scroll down to 2024 Public Improvements Project List and select Linneman Reconstruction

4. Scroll down to Notification Signup and you will fill out a quick survey to receive project updates



# Contact Us

## **Construction Project Manager**

Thomas Hagerty

[Email : thagerty@glenview.il.us](mailto:thagerty@glenview.il.us)

847-904-4421

## **Construction Inspector**

Dayvohn Braxton

[Email : dbraxton@glenview.il.us](mailto:dbraxton@glenview.il.us)

847-904-4238

If you consider doing work on your private property, a permit is required for:

- New driveway
- Private drain and connection to public sewer

Get more information here:

<https://www.glenview.il.us/Pages/Building-Permits.aspx>