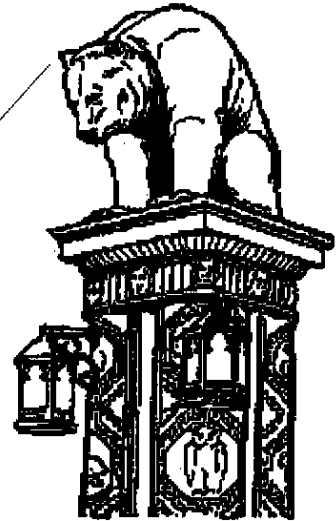
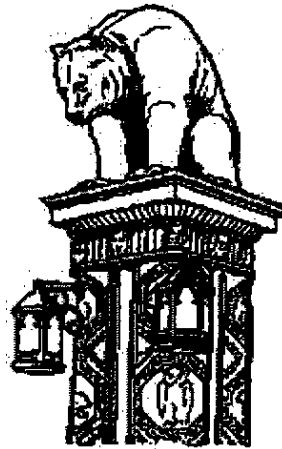


# VILLAGE OF GLENVIEW



**Geodetic  
Control Markers,  
Vertical and Horizontal**

**Engineering Division  
Floating (3)**



**All Benchmarks are the property of the  
Village of Glenview**

**Warning**

**All monument caps must be secured after each use!  
Any unsecured, damaged or missing caps must be  
reported at once to the Village of Glenview's  
Engineering Division at  
(847) 904-4340.**

1992 Vertical and Horizontal Control Markers

PIN Number of Property 03-13-400-999-9999

Station Number 13

Horizontal Control -- Illinois State Plane Coordinates

Northing 1,982,998.923'N

Easting 1,104,344.199'E

Vertical Control -- USGS Elevations

Elevation 640.50'

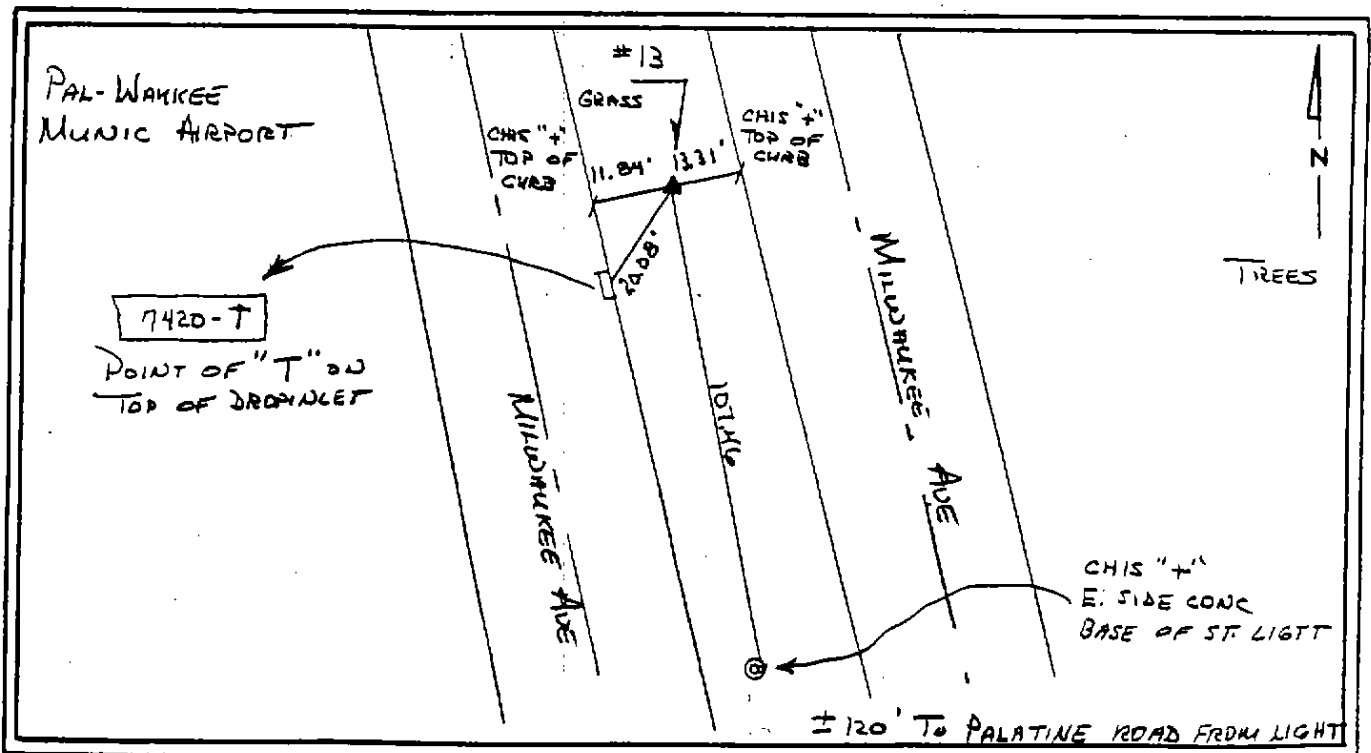
Description of the Control's Location --

A #5 rebar and cap, 0.1' below ground, in the median of Milwaukee Avenue, about 230' N of the intersection with Palatine Road.

(Prospect Heights). 20.08' NE-ly of the point of a "T" on the top of a drop inlet, 11.84' ENE-ly of a "+" cut on the top of curb, 13.31' WSW-ly of a "+" cut on the top of curb, and 107.46' NNW-ly of a "+" of a cut on the E side of the concrete base to a street light.

Streets in Close Proximity -- Separate street names with semi-colons  
MILWAUKEE AVENUE; PALATINE ROAD

Verified in 2002



1992 Vertical and Horizontal Control Markers

PIN Number of Property 04-22-100-038-9999

Station Number 14

Horizontal Control -- Illinois State Plane Coordinates

Northing 1,982,711.960'N

Easting 1,121,040.199'E

Vertical Control -- USGS Elevations

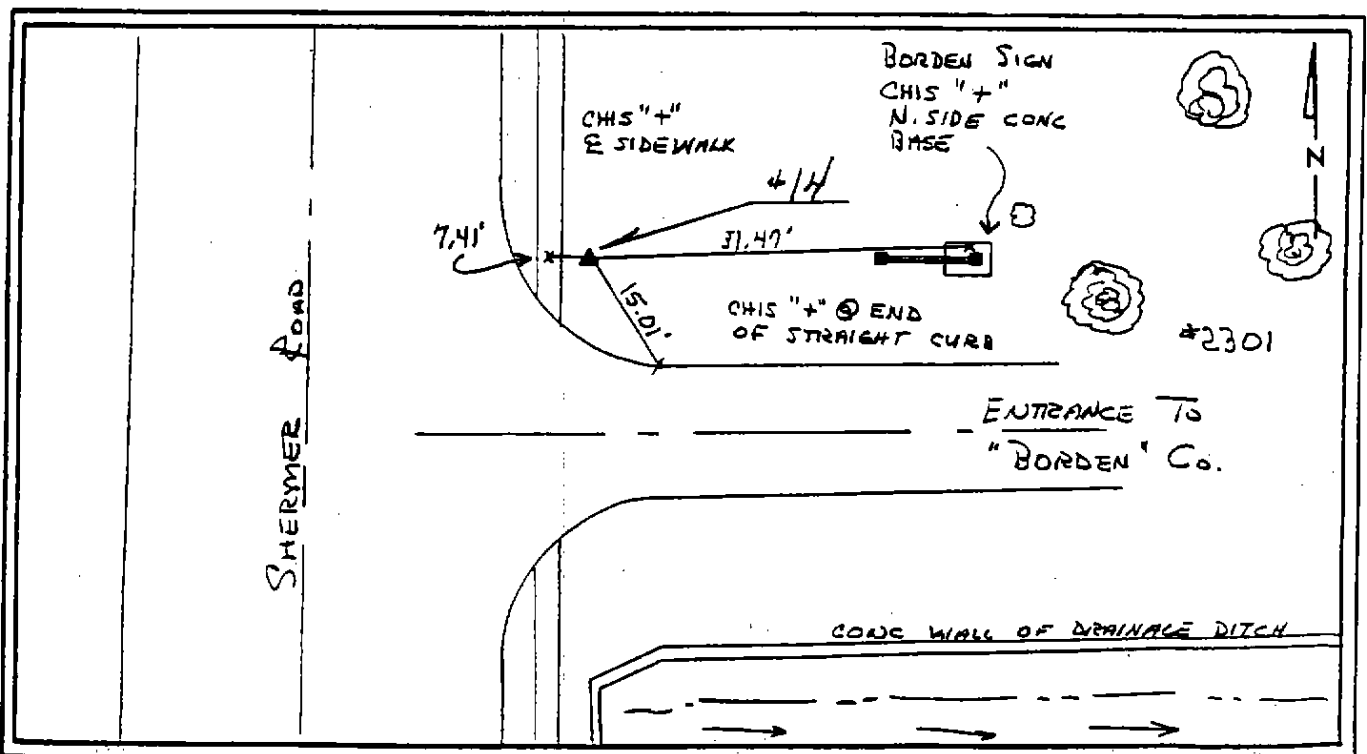
Elevation 647.73'

Description of the Control's Location --

A "GPS" monument on the E side of Shermer Road, beyond the sidewalk, approximately 0.2 mi S of Raymond Drive, and just N of the entrance to Borden & Co. (Northbrook). 7.41' E-ly of the centerline of the sidewalk, 31.47' W-ly of a "+" cut in the N side of the concrete base to a sign, and 15.01' NW-ly of a "+" cut at the end of the straight curb on the N side of Borden's driveway.

Streets in Close Proximity -- Separate street names with semi-colons  
SHERMER ROAD; VALENCIA DRIVE; RAYMOND DRIVE; WILLOW ROAD

Verified in 2002



1992 Vertical and Horizontal Control Markers

PIN Number of Property 04-21-112-012-9999 Station Number 15

Horizontal Control -- Illinois State Plane Coordinates  
Northing 1,980,399.274' N Easting 1,168,100.63' E

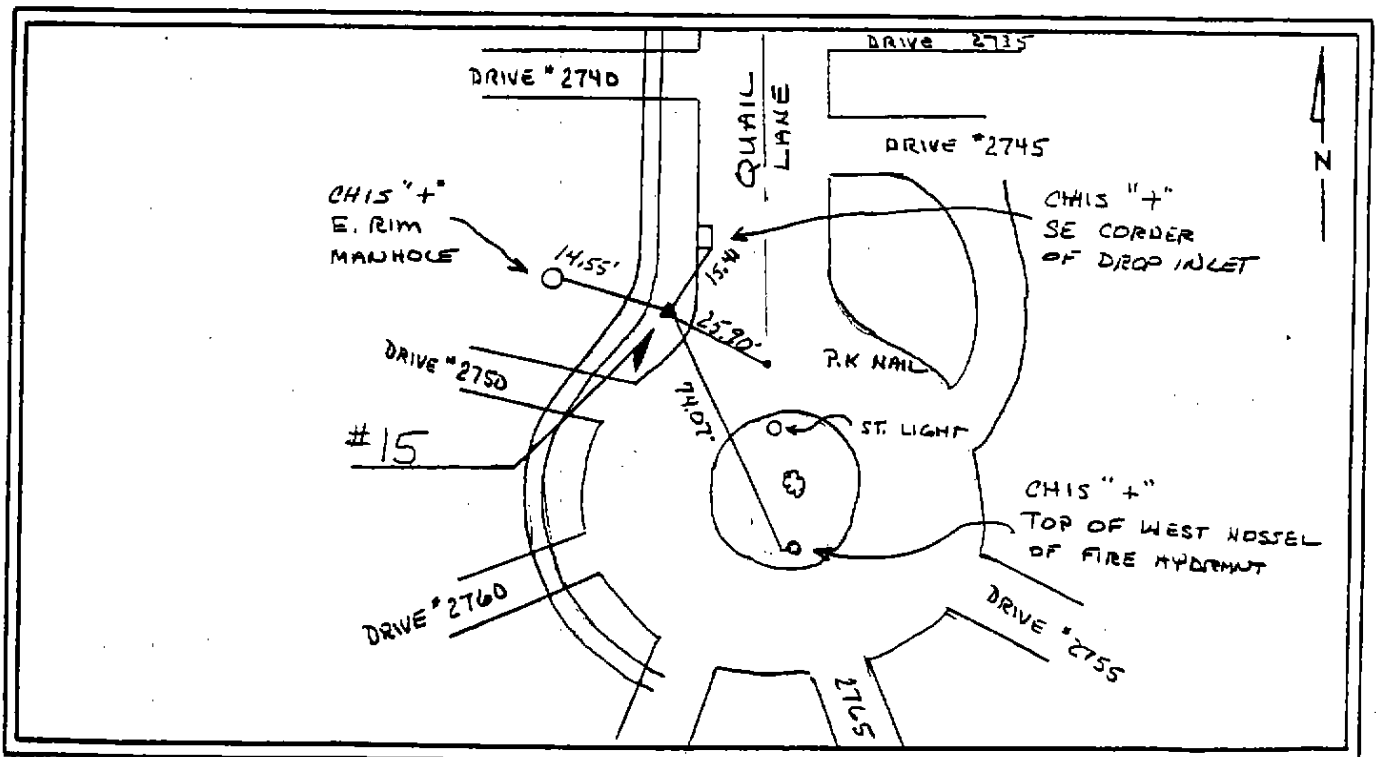
Vertical Control -- USGS Elevations  
Elevation 670.50'

Description of the Control's Location --

A "GPS" monument in the parkway of Quail Lane, between the sidewalk and the back of curb, N of the driveway to 2750 Quail Lane (Northbrook). 15.41' SW-ly of a "+" cut in the SE corner of a drop inlet, 14.55' E-ly of a "+" cut in the E rim of a manhole, 74.07' NW-ly of the top of the W nosseL of the hydrant on the S side of the island, and 25.90' NW-ly of a PK nail in the centerline of Quail Lane.

Streets in Close Proximity -- Separate street names with semi-colons  
QUAIL LANE; BRIAN DRIVE; WILLOW ROAD; WESTFIELD LANE; ASTOR COURT

Verified in 2002



1992 Vertical and Horizontal Control Markers

PIN Number of Property 04-24-300-005-9999 Station Number 16

Horizontal Control -- Illinois State Plane Coordinates  
 Northing 1,979,323.659'N Easting 1,131,627.497'E

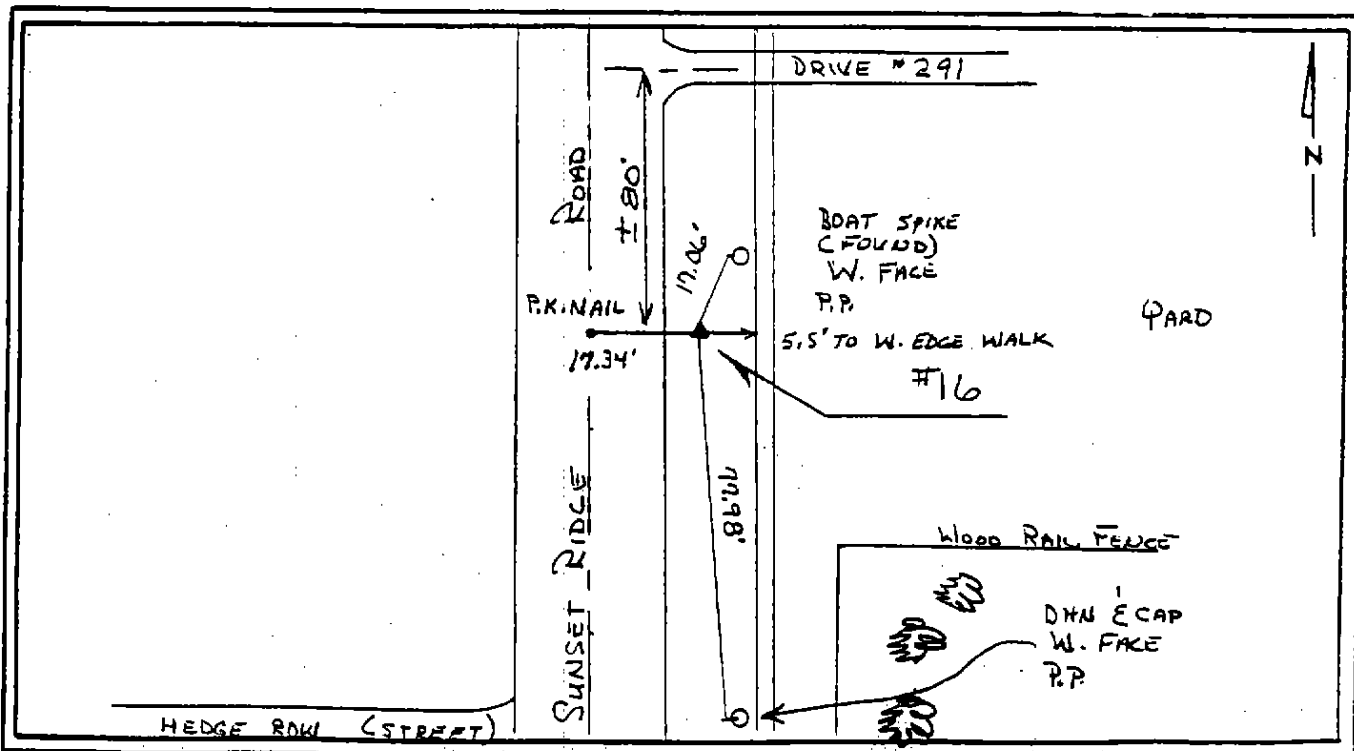
Vertical Control -- USGS Elevations  
 Elevation 651.84'

Description of the Control's Location --

A #5 rebar and cap, 0.1' below ground, in the E parkway of Sunset Ridge Road, about 80 S of the centerline of the driveway for 291 Sunset Ridge, and about 205' S of Burr Oak Road (Northfield). 5.5' W-ly of the W edge of the sidewalk, 17.34' E-ly of a PK nail in the centerline of Sunset Ridge, 17.06' SW-ly of a boat spike in the W face of a power pole, and 77.98' N-ly of a DHN and Cap on the W face of a power pole.

Streets in Close Proximity -- Separate street names with semi-colons  
 SUNSET RIDGE ROAD; BURR OAK ROAD; HEDGE ROW; BIRCHWOOD LANE

Verified in 2002



1992 Vertical and Horizontal Control Markers

PIN Number of Property 03-25-211-023-9999

Station Number 17

Horizontal Control -- Illinois State Plane Coordinates

Northing 1,977,492.551'N

Easting 1,104,260.216'E

Vertical Control -- USGS Elevations

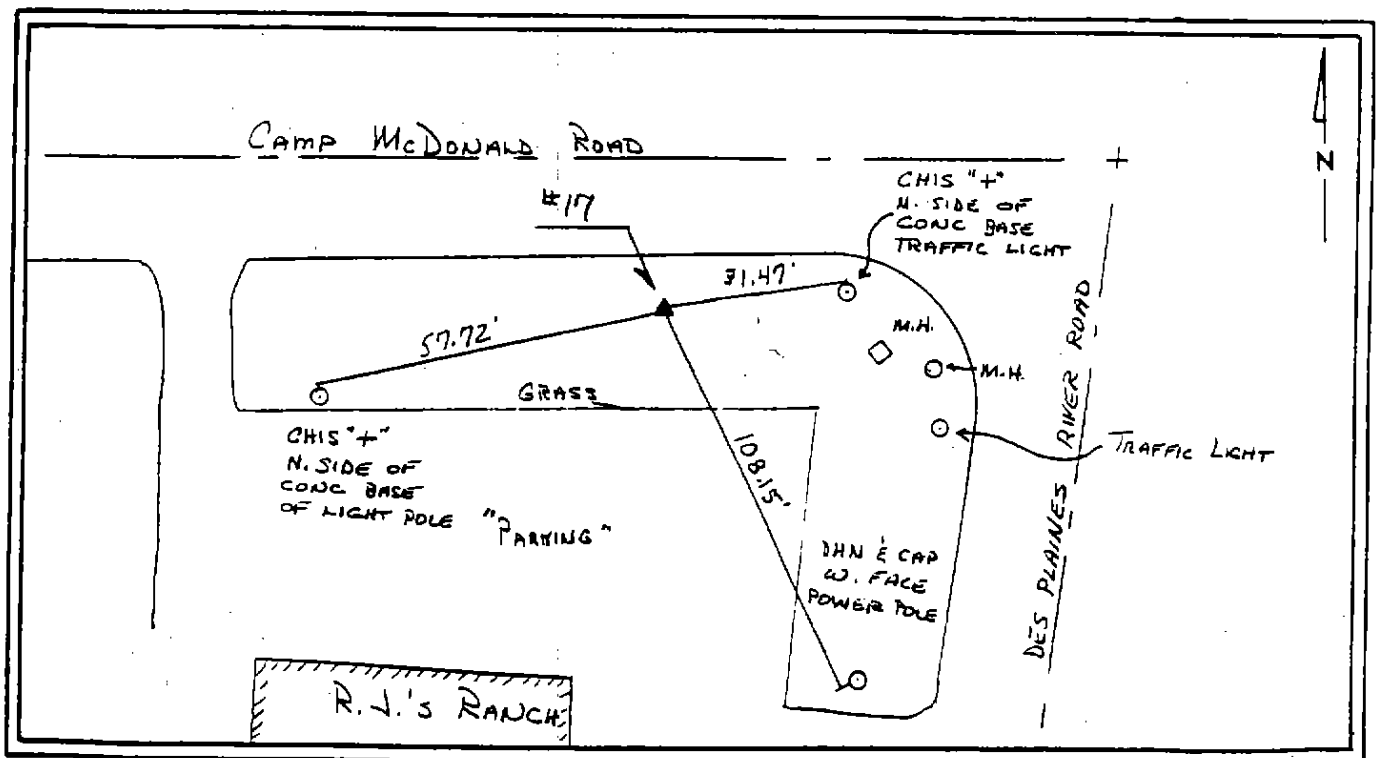
Elevation 637.98'

Description of the Control's Location --

A #4 rebar and cap, 0.1' below ground, on the S parkway of Camp McDonald Road, just W of Des Plaines River Road (Mount Prospect). Station is #4 rebar and cap. 8.2' S-ly of the back of curb, 108.15' NW-ly of a DHN and Cap in the W face of a power pole, 57.72' ENE-ly of a "+" cut in the N side of a concrete base to a light, and 31.47' WSW-ly of a "+" cut in the N side of the concrete base to a traffic light.

Streets in Close Proximity -- Separate street names with semi-colons  
CAMP MCDONALD ROAD; DES PLAINES RIVER ROAD

Verified in 2002



2002 HORIZONTAL CONTROL DATA

**AYRES**  
ASSOCIATES

SET BY : Owen Ayres & Associates Inc.  
2445 Darwin Road  
Madison, WI 53704-3192, (608)249-0471

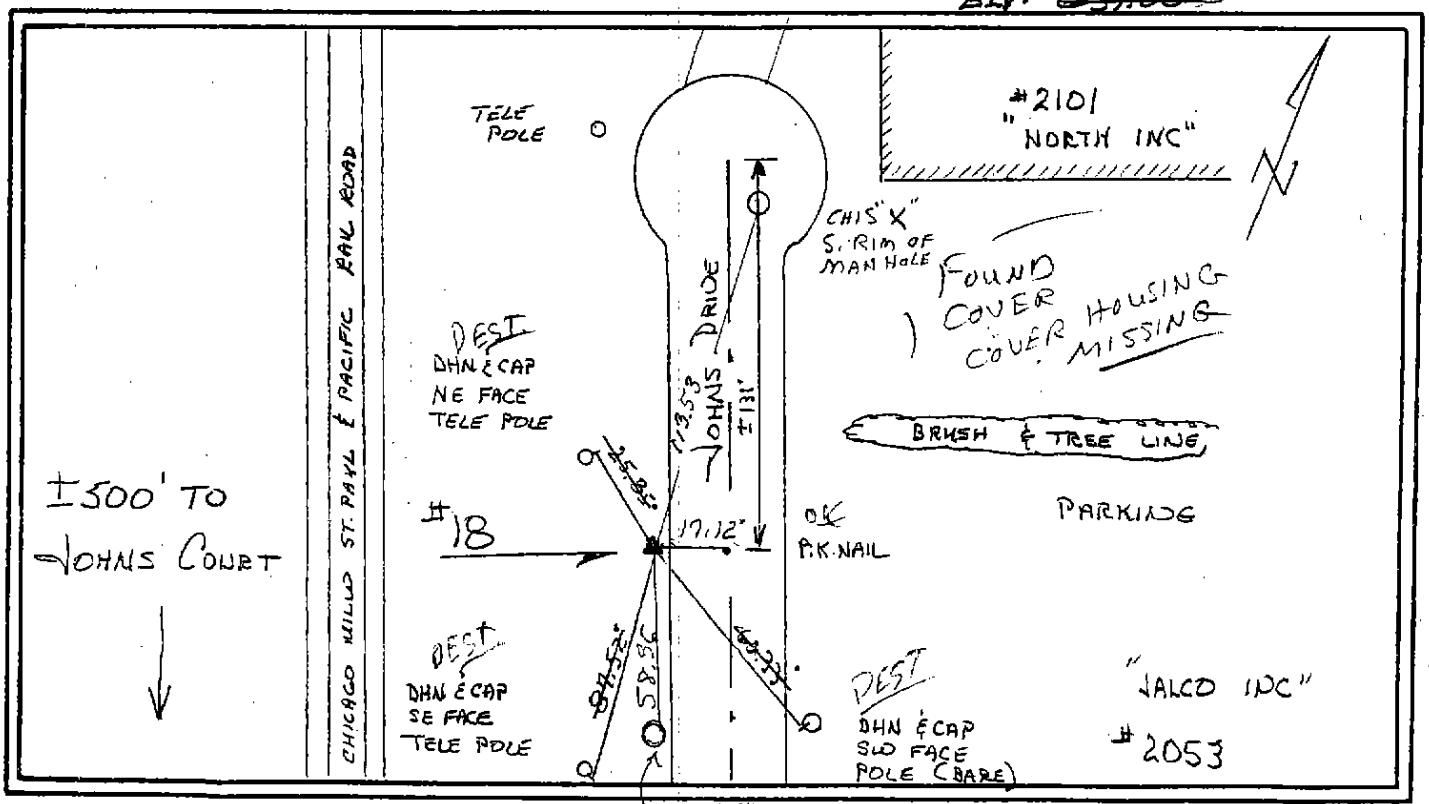
PROJECT : GLENVIEW ILLINOIS	NO. 3381.00	STATION : 18
GPS 2ND ORDER TRAVERSE		STATE : ILLINOIS
TYPE OF MARK : BERNTSEN GPS 3D MON.	YEAR SET : 1992	COUNTY : COOK
ILLINOIS 1983 SYSTEM OF PLANE COORDINATES		ILLINOIS EAST Zone
COMBINATION FACTOR : 0.99996795		QUADRANGLE : PARK RIDGE
NORTHING : 1,977,302.302'	EASTING : 1,125,189.347'	DELTA ANGLE: 0-20-53

To Station	North Azimuth	Bearing	Grid Distance
------------	---------------	---------	---------------

COVER MISSING REC. OK  
 CAP AT GRD 4-1-02  
 COULD NOT FLUSH  
 TARGET PT. IS IN GRAVEL

LOCALITY: IN "GLENVIEW"; ABOUT 0.2 MILES WEST AND 200 FEET SOUTH OF THE NORTHEAST CORNER OF SECTION 27 T42N. R12E.  
ABOUT 0.6 MILES NORTH-NORTHWEST FROM THE INTERSECTION OF JOHNS DR. AND CHESTNUT AVE. THE STATION IS A "GPS" MONUMENT WITH THE ACCESS COVER FLUSH WITH THE GROUND.

REVISED ELV. 631.105  
 ELV. 631.00



±500' TO  
JOHNS COURT

#2101  
"NORTH INC"

FOUND  
COVER HOUSING  
COVER MISSING

BRUSH & TREE LINE

PARKING

OK  
P.K. NAIL

"JALCO INC"

#2053

CHIS "X" F. RIM MAN HOLE



1992 Vertical and Horizontal Control Markers

PIN Number of Property 04-28-300-027-9999 Station Number 19

Horizontal Control -- Illinois State Plane Coordinates  
Northing 1,974,841.208'N Easting 1,115,885.409'E

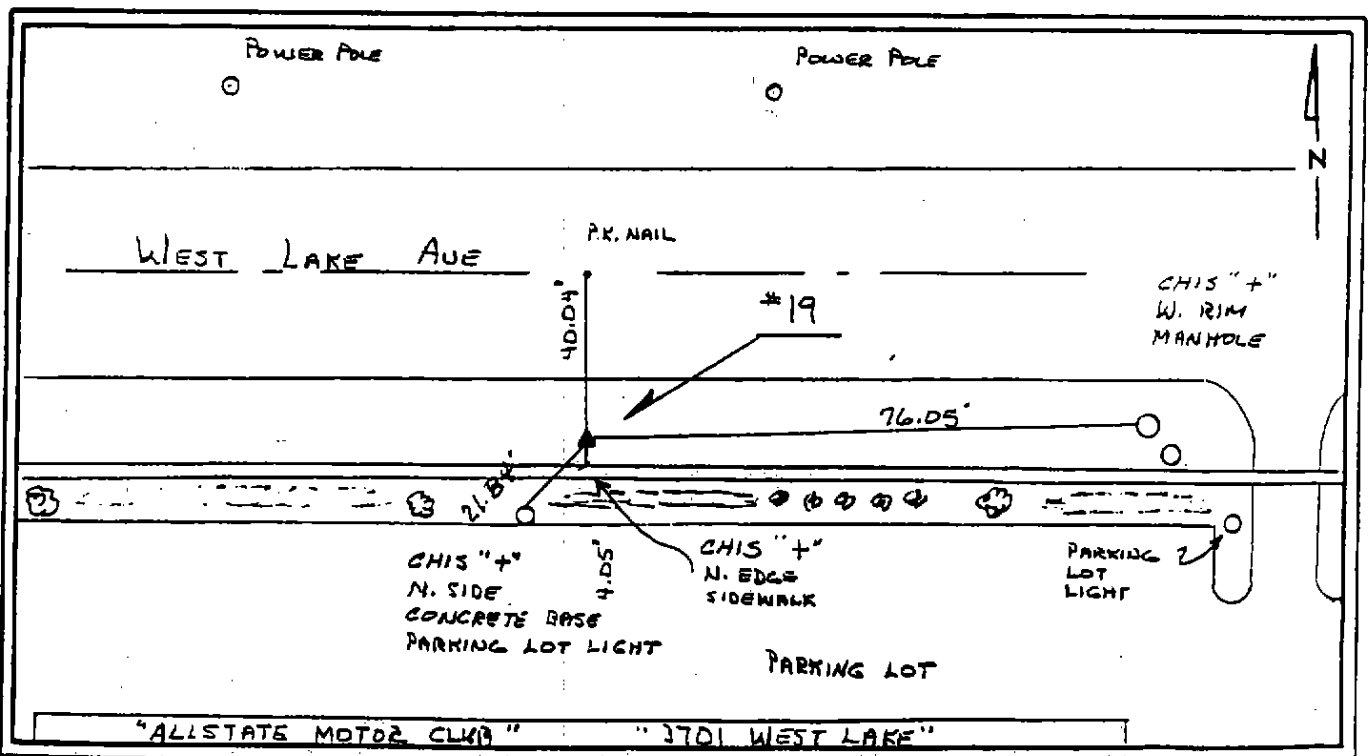
Vertical Control -- USGS Elevations  
Elevation 676.91'

Description of the Control's Location --

A "GPS" monument in the S parkway of West Lake Avenue, just E of Phingsten Road. (Glenview) 40.04' S-ly of a PK nail in the centerline of West Lake Avenue, 13.2' S-ly of the back of curb, 21.84' NE-ly of a "+" cut in the N side of the concrete base to a parking lot light, 4.05' N-ly of a "+" cut on the N edge of the sidewalk, and 76.05' W-ly of a "+" cut on the W rim of a manhole.

Streets in Close Proximity -- Separate street names with semi-colons  
WEST LAKE AVENUE; EAST LAKE AVENUE; PHINGSTEN ROAD; LAFONTAINE DRIVE; JOY DRIVE

Verified in 2002



1992 Vertical and Horizontal Control Markers

PIN Number of Property 04-26-401-053-9999      Station Number 20

Horizontal Control -- Illinois State Plane Coordinates  
 Northing 1,974,627.274'N      Easting 1,130,748.067'E

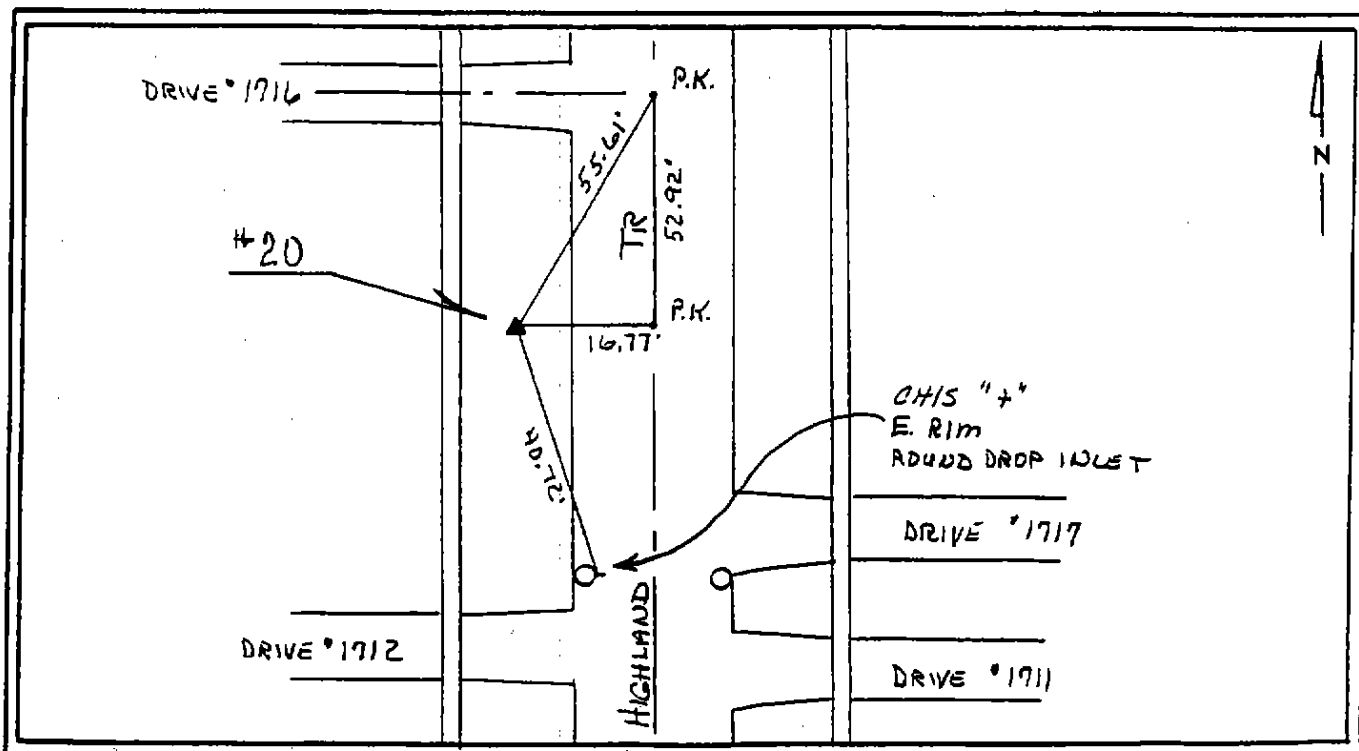
Vertical Control -- USGS Elevations  
 Elevation 654.38'

Description of the Control's Location --

A "GPS" monument in the W parkway of Highland Terrace, between 1712 and 1716 Highland Terrace and about 200' S of Kenilworth Avenue. (Glenview) 16.77' W-ly of a PK nail in the centerline of Highland Terrace, 55.61' SW-ly of a PK nail at the centerlines of Highland Terrace and the driveway of 1716 Highland Terrace, and 40.72' NNW-ly of a "+" cut in the E rim of a round drop inlet.

Streets in Close Proximity -- Separate street names with semi-colons  
 HIGHLAND TERRACE; KENILWORTH AVENUE; GLENWOOD AVENUE; WOODLAWN AVENUE; PLEASANT DRIVE

Verified in 2002



1992 Vertical and Horizontal Control Markers

PIN Number of Property 05-30-400-012-9999 Station Number 21

Horizontal Control -- Illinois State Plane Coordinates  
Northing 1,974,648.390'N Easting 1,139,862.563'E

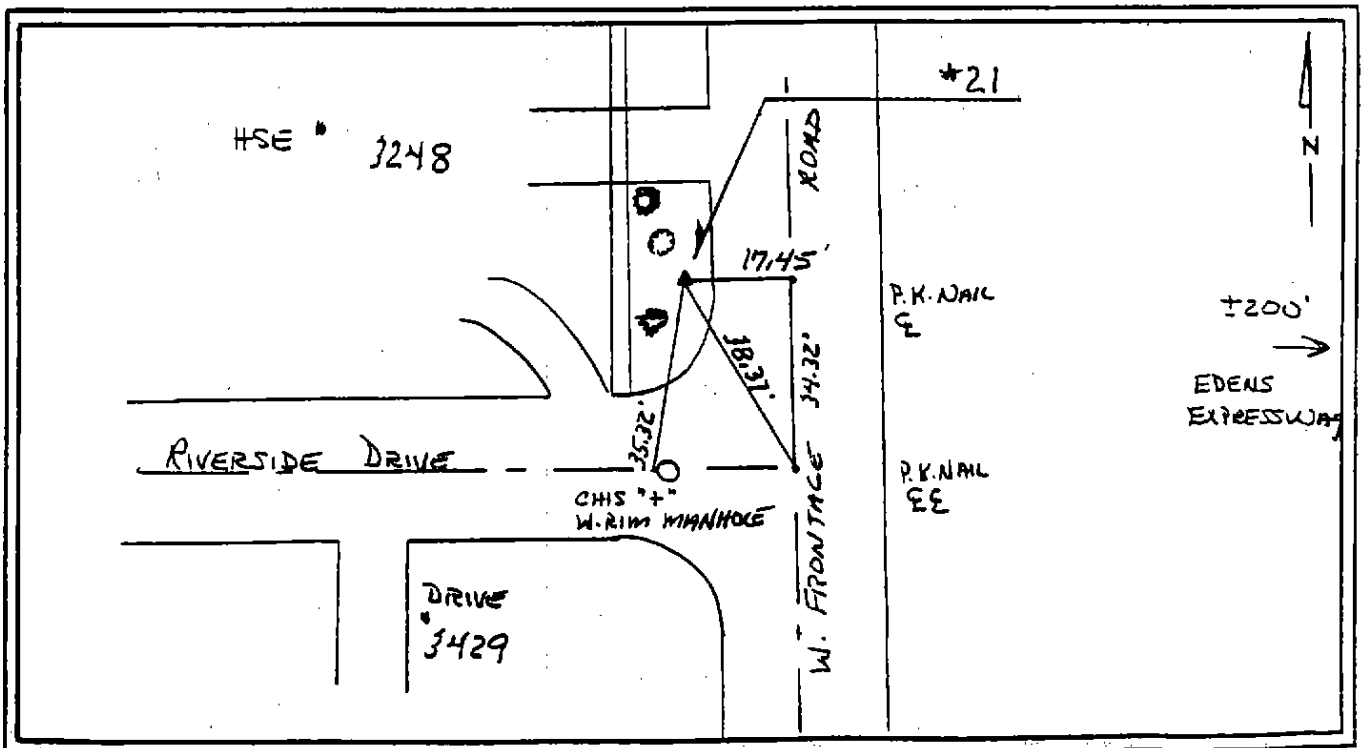
Vertical Control -- USGS Elevations  
Elevation 627.04'

Description of the Control's Location --

A #4 rebar and cap, 0.1' below ground, in the W parkway of the W Frontage Road (also known as Skokie Road), just N or Riverside Drive (Wilmette). 35.32' N-ly of a "+" cut in the W rim of a manhole in Riverside Drive, 38.37' NW-ly of a PK nail at the centerlines of Riverside Drive and Skokie Road, and 17.45' W-ly of a PK nail in the centerline of Skokie Road (34.32' N-ly of the centerline of Riverside Drive).

Streets in Close Proximity -- Separate street names with semi-colons  
RIVERSIDE DRIVE; WEST FRONTAGE ROAD; SKOKIE ROAD; EDENS EXPRESSWAY

Verified in 2002



1992 Vertical and Horizontal Control Markers

PIN Number of Property 03-36-204-050-9999 Station Number 22

Horizontal Control -- Illinois State Plane Coordinates  
Northing 1,972,199.146'N Easting 1,103,732.494'E

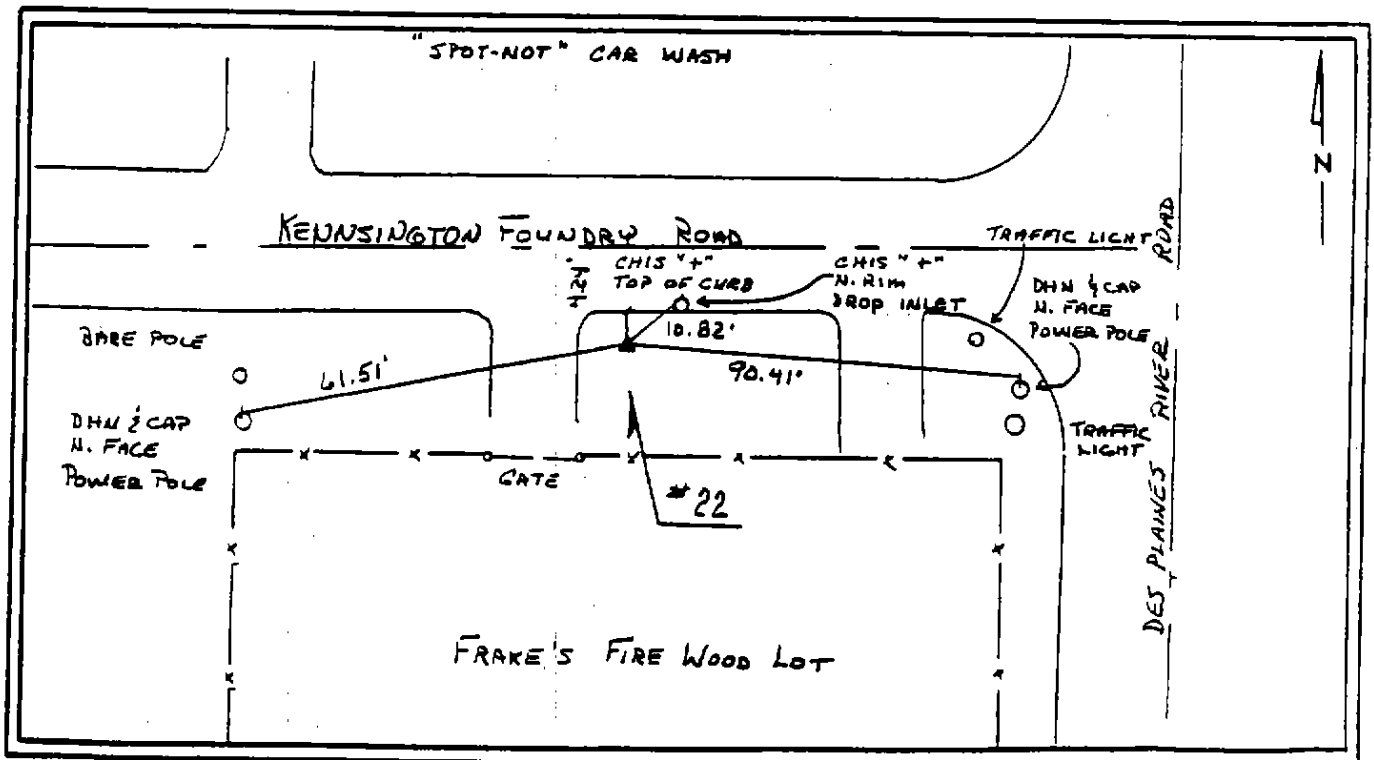
Vertical Control -- USGS Elevations  
Elevation 638.12'

Description of the Control's Location --

A #4 rebar and cap, 0.1' below ground, in the S parkway of Kensington Foundry Road (Uninc. Cook Co.). 4.24' S-ly of a "+" cut in the top of the curb, 10.82' SW-ly of a "+" cut on the N rim of a drop inlet, 90.41' W-ly of a DHN and Cap in the N face of a power pole at the intersection with des Plaines River Road, and 61.51' ENE-ly of a DHN and Cap in the N face of a power pole.

Streets in Close Proximity -- Separate street names with semi-colons  
KENNSINGTON FOUNDRY ROAD; DES PLAINES RIVE ROAD

Verified in 2002



1992 Vertical and Horizontal Control Markers

PIN Number of Property 04-27-400-057-9999      Station Number 23

Horizontal Control -- Illinois State Plane Coordinates  
 Northing 1,972,322.555'N      Easting 1,125,799.025'E

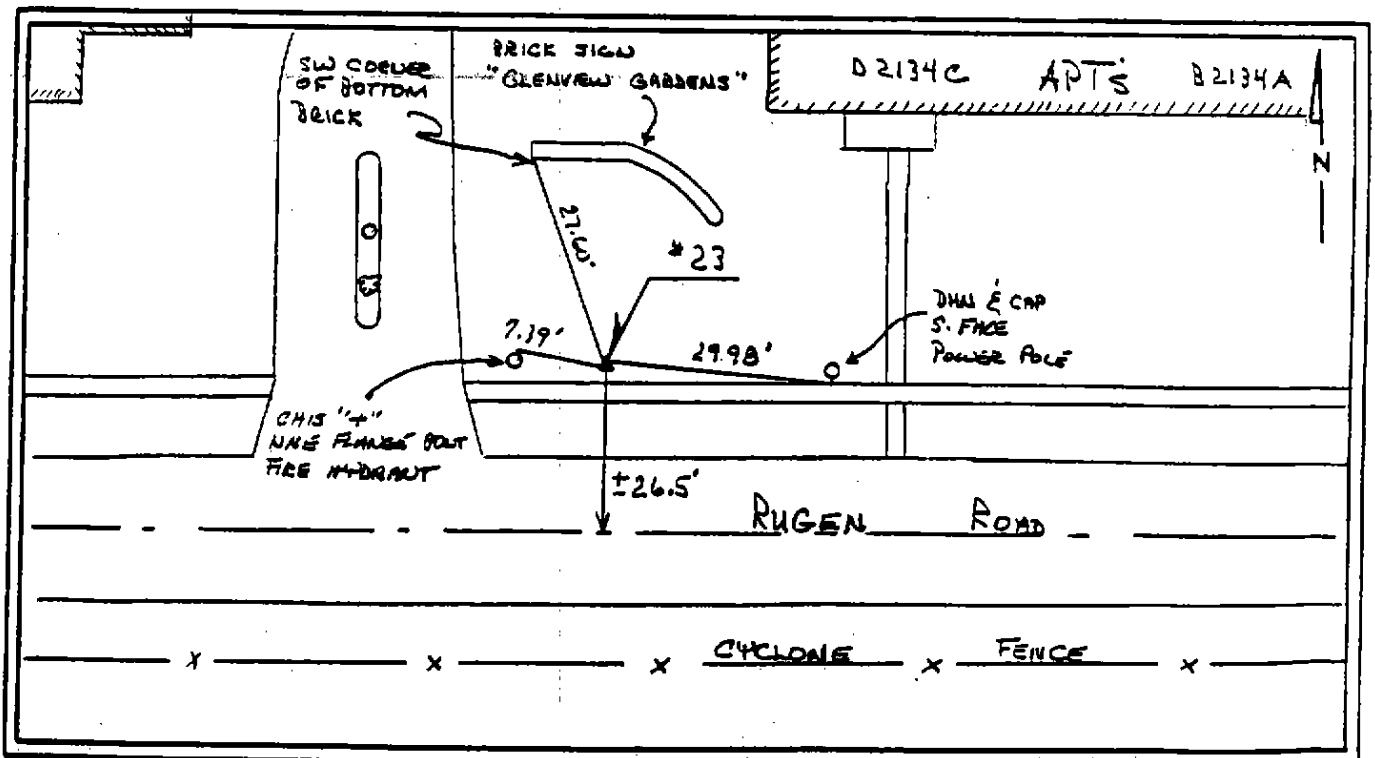
Vertical Control -- USGS Elevations  
 Elevation 635.51'

Description of the Control's Location --

A "GPS" monument on the N side of Rugen Road, SW-ly of 2134D Rugen Road. (Glenview) 1.1' N-ly of the N edge of the sidewalk, 26.5' N-ly of the centerline of Rugen Road, 7.39' E-ly of a "+" cut in the NNE flange bolt of a fire hydrant, 29.98' W-ly of a DHN and Cap to the S face of a power pole, and 27.60' SSE-ly of the SW corner of the bottom brick in the "Glenview Gardens" sign.

Streets in Close Proximity -- Separate street names with semi-colons  
 RUGEN ROAD; LEHIGH AVENUE; EAST LAKE AVENUE

Verified in 2002



1992 Vertical and Horizontal Control Markers

PIN Number of Property 04-32-404-031-9999 Station Number 24

Horizontal Control -- Illinois State Plane Coordinates  
Northing 1,969,568.676'N Easting 1,115,656.588'E

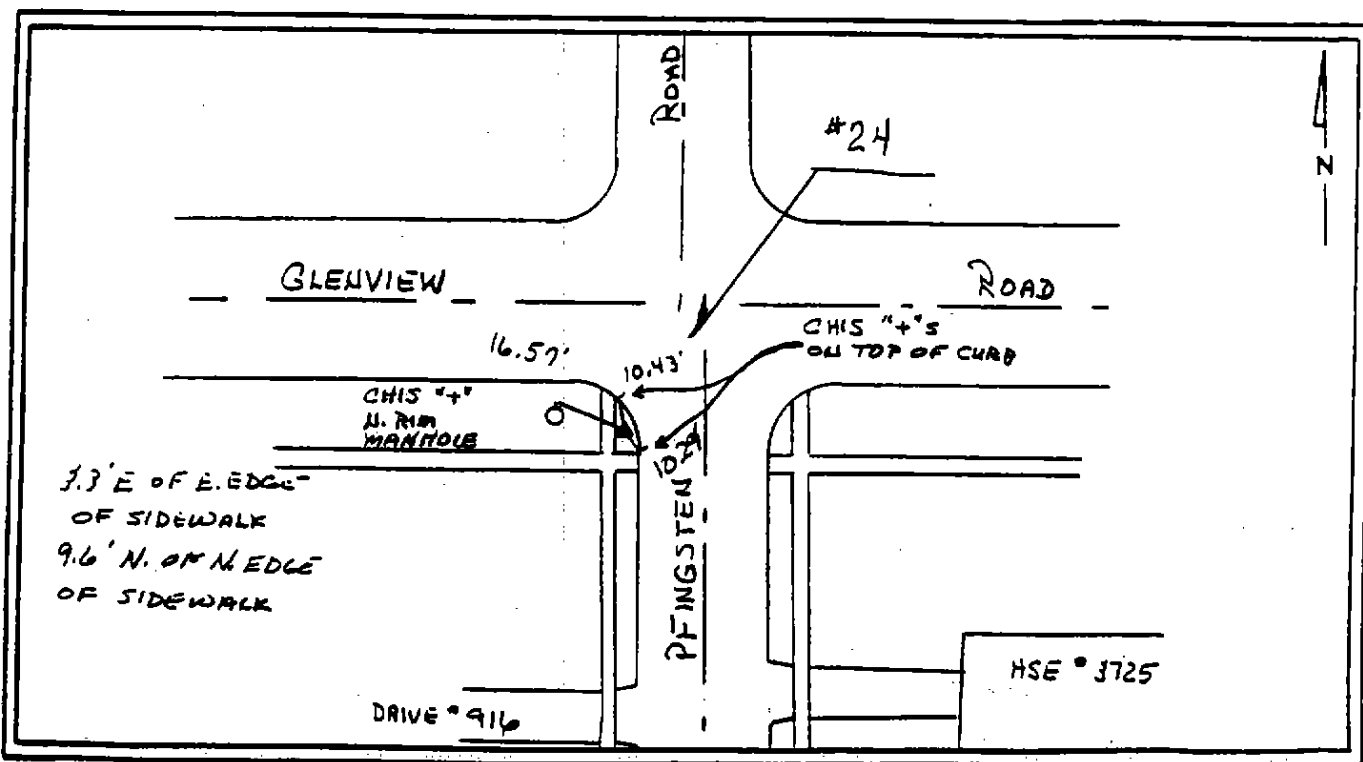
Vertical Control -- USGS Elevations  
Elevation 683.18'

Description of the Control's Location --

A "GPS" monument in the parkway at the SW corner of Glenview and Pfingsten Roads. (Glenview) 10.43' S-ly of a "+" cut on the top of curb, 10.29' NW-ly of a "+" cut on the top of curb, and 16.57' WSW-ly of a "+" cut on the N rim of a manhole.

Streets in Close Proximity -- Separate street names with semi-colons  
GLENVIEW ROAD; PFINGSTEN ROAD

Verified in 2002



1992 Vertical and Horizontal Control Markers

PIN Number of Property 04-36-305-038-9999

Station Number 25

Horizontal Control -- Illinois State Plane Coordinates

Northing 1,969,248.594'N

Easting 1,133,758.307'E

Vertical Control -- USGS Elevations

Elevation 637.13'

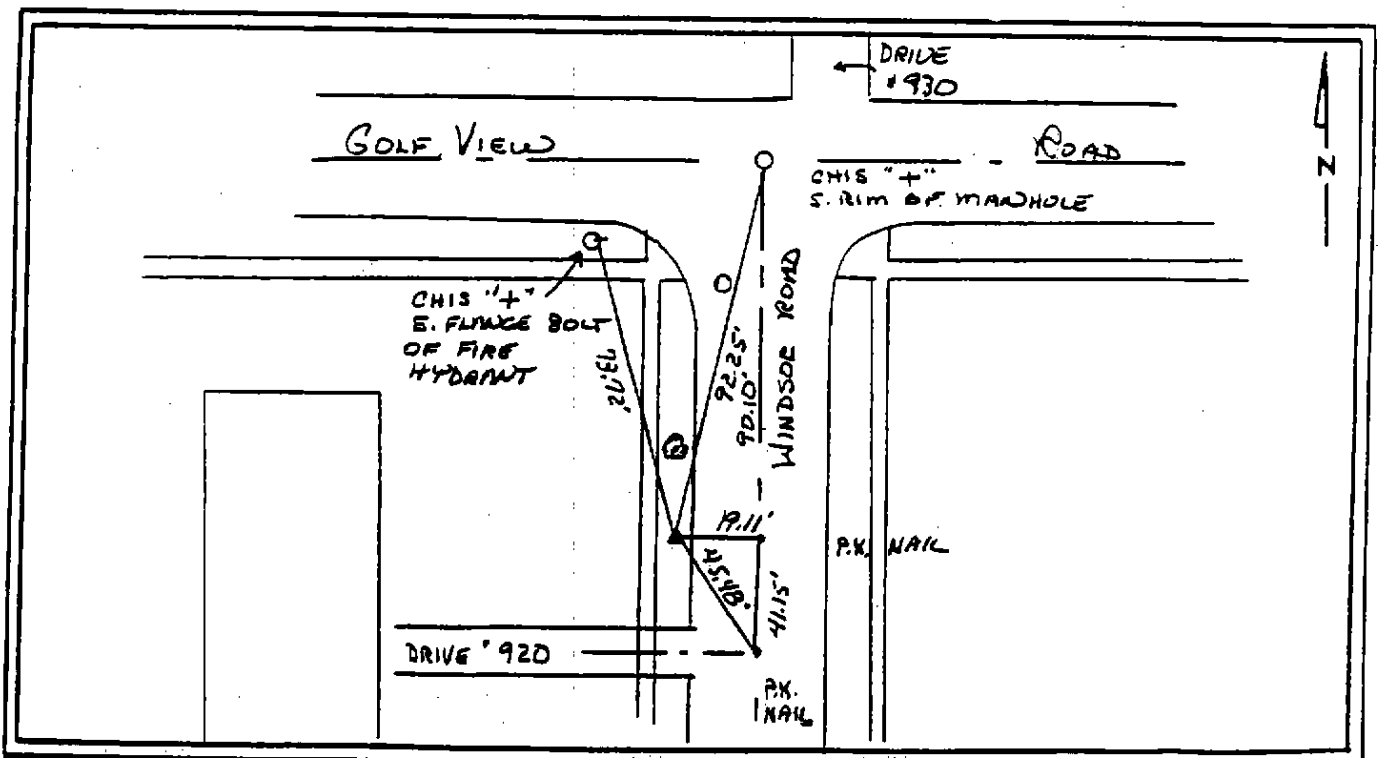
Description of the Control's Location --

A "GPS" monument in the W parkway of Windsor Road, just S of Golf View Road. (Glenview) 19.11' W-ly of a PK nail in the centerline of Windsor Road, 45.48' NW-ly of a PK nail in the centerlines of Windsor Road and the driveway to 920 Windsor Road, 73.72' SSE-ly of a "+" cut on the E flange bolt of a fire hydrant on the S side of Golf View Road, and 92.25' SSW-ly of a "+" cut on the S rim of a manhole at the centerlines of Windsor and Golf View Roads.

Streets in Close Proximity -- Separate street names with semi-colons

GOLF VIEW ROAD; WINDSON ROAD; WAGNER ROAD; GLENVIEW ROAD

Verified in 2002



1992 Vertical and Horizontal Control Markers

PIN Number of Property 05-31-401-039-9999

Station Number 26

Horizontal Control -- Illinois State Plane Coordinates

Northing 1,969,442.774'N

Easting 1,139,840.197'E

Vertical Control -- USGS Elevations

Elevation 623.63'

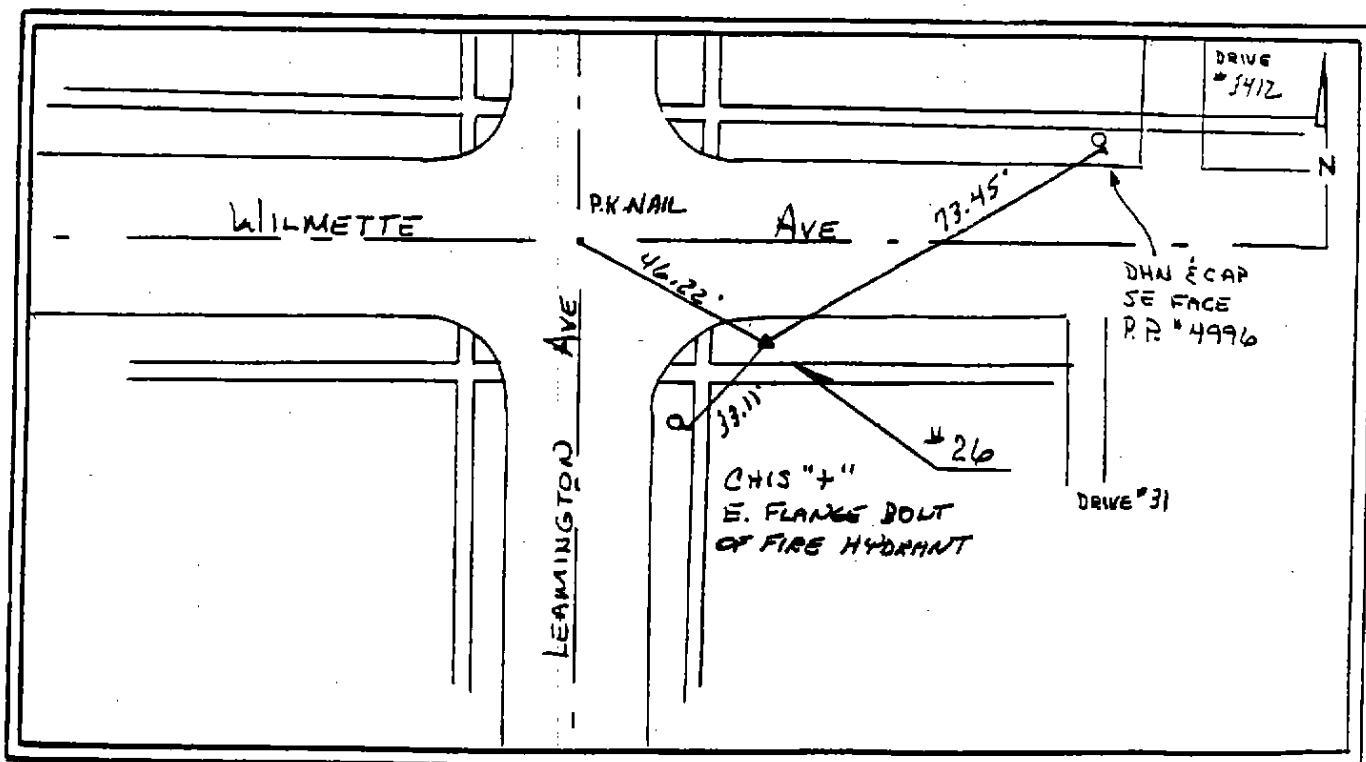
Description of the Control's Location --

A "GPS" monument in the S parkway of Wilmette Avenue, just E of Leamington Avenue. (Glenview) 46.22' SE-ly of a PK nail at the centerlines of Wilmette and Leamington Avenues, 33.11' NE-ly of a "+" cut in the E flange bolt of a hydrant on the E side of Leamington, and 73.45' SW-ly of a DHN and Cap in the SE face of power pole #4996.

Streets in Close Proximity --

Separate street names with semi-colons  
WILMETTE AVENUE; LEAMINGTON AVENUE; EDENS EXPRESSWAY; GLENVIEW ROAD; LARAMIE AVENUE

Verified in 2002





1992 Vertical and Horizontal Control Markers

PIN Number of Property 04-32-300-022-0000 Station Number 27

Horizontal Control -- Illinois State Plane Coordinates  
 Northing 1,967,013.635'N Easting 1,111,037.640'E

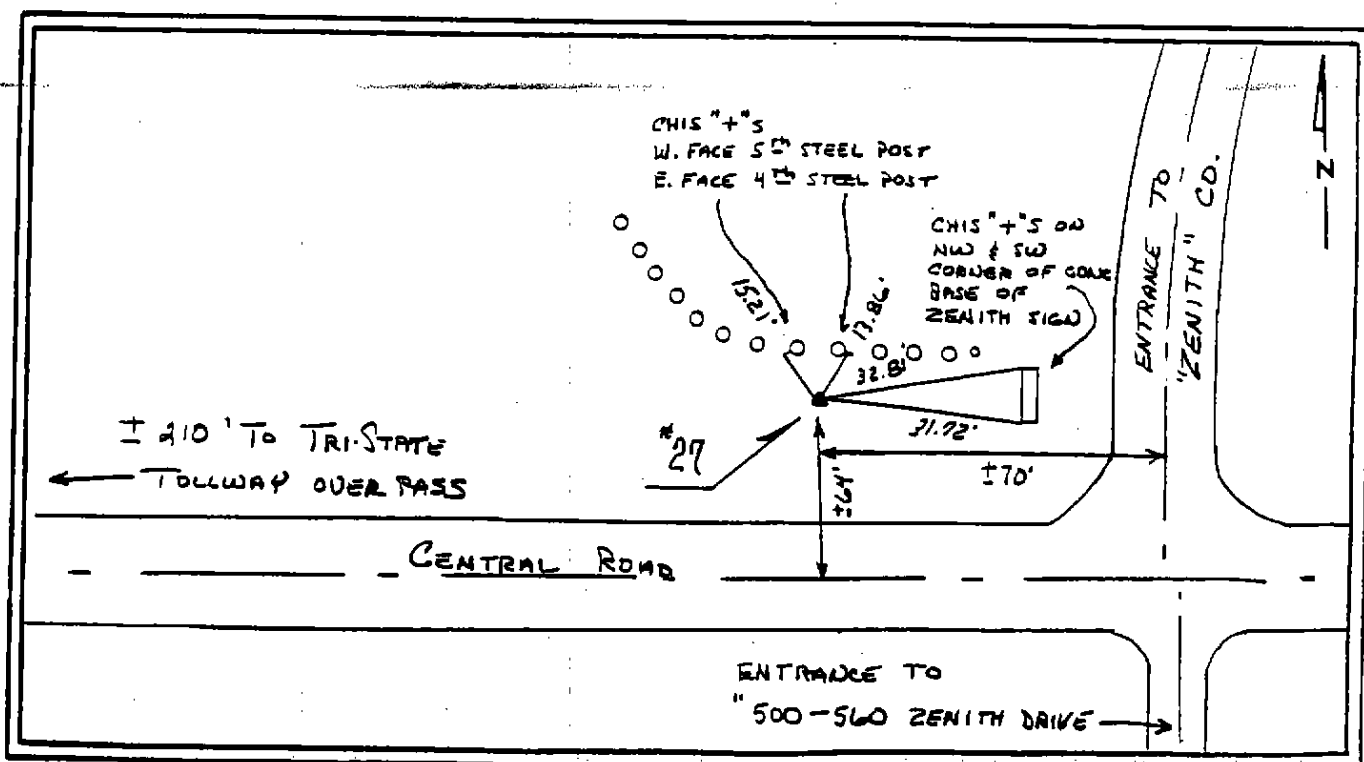
Vertical Control -- USGS Elevations  
 Elevation 638.00'

Description of the Control's Location --

A "GPS" monument on the N side of Central, just W of the entrance to "Zenith Co." (Glenview) 64' N-ly of the centerline of Central Avenue, 70' W-ly of the centerline of Zenith's entrance, 13.86' SW-ly of a "+" cut on the 4th steel post (counting E to W), 15.21' SE-ly of a "+" cut on the 5th steel post, and 32.81' WSW-ly and 31.72' WNW-ly of "+"s cut on the NW and SW corners of the concrete base of the Zenith sign.

Streets in Close Proximity -- Separate street names with semi-colons  
 CENTRAL AVENUE; TRI-STATE TOLLWAY; DEARLONE ROAD; CHICAGO AND NORTHWESTERN RR

Verified in 2002



# 2002 HORIZONTAL CONTROL DATA



SET BY : Owen Ayres & Associates Inc.  
2445 Darwin Road  
Madison, WI 53704-3192, (608)249-0471

PROJECT : GLENVIEW ILLINOIS	NO. 3381.00	STATION : 28
GPS 2ND ORDER TRAVERSE		STATE : ILLINOIS
TYPE OF MARK : BERNTSEN GPS 3D MON.	YEAR SET : 1992	COUNTY : COOK
ILLINOIS 1983 SYSTEM OF PLANE COORDINATES		ILLINOIS EAST Zone
COMBINATION FACTOR : 0.99996795		QUADRANGLE : PARK RIDGE
NORTHING : 1,966,796.490'	EASTING : 1,126,655.381'	DELTA ANGLE: 0-21-05

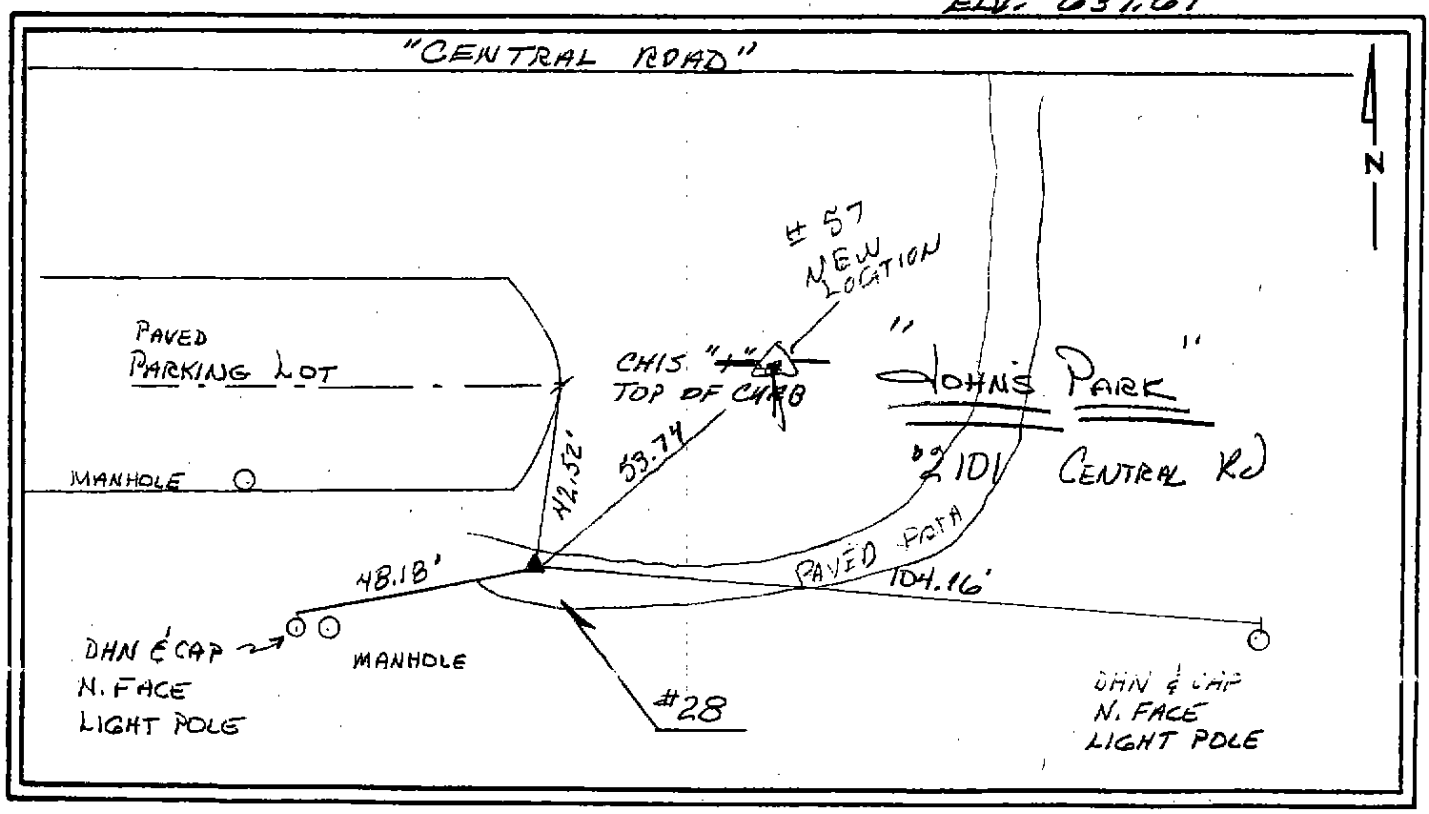
To Station	North Azimuth	Bearing	Grid Distance
------------	---------------	---------	---------------

POINT # 28  
FOUND "OK"

NEW PT # 57

LOCALITY: IN "GLENVIEW": ABOUT 800 FEET WEST OF THE  
NORTHEAST CORNER OF SECTION 12, T41N, R12E. LOCATED IN  
JOHN'S PARK OPPOSITE LINCOLN ST. ABOUT 200 FEET FROM THE  
PARK ENTRANCE. THE STATION IS A "GPS" MONUMENT WITH THE  
ACCESS COVER FLUSH WITH THE GROUND.

ELV: 637.67'



1992 Vertical and Horizontal Control Markers

PIN Number of Property 10-07-400-077-9999 Station Number 29

Horizontal Control -- Illinois State Plane Coordinates  
Northing 1,964,547.475'N Easting 1,131,404.095'E

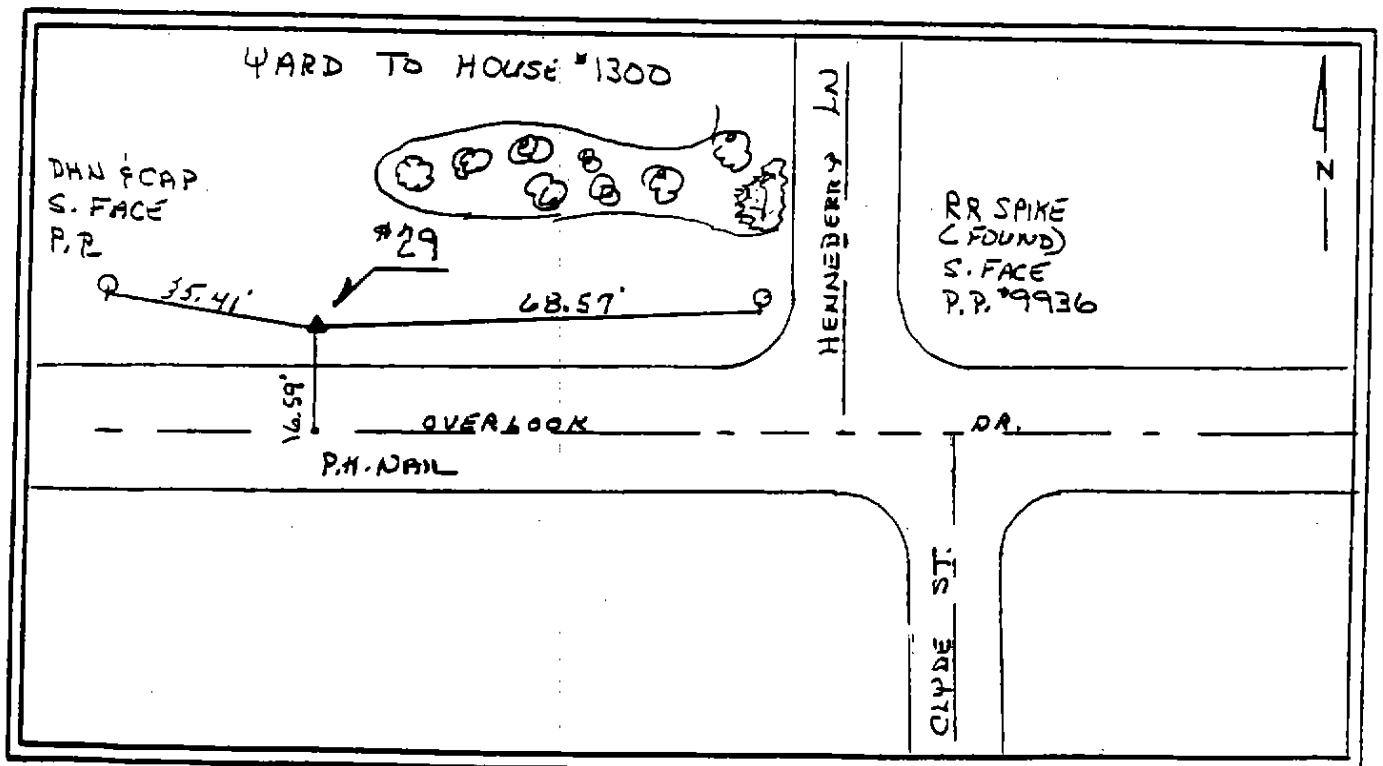
Vertical Control -- USGS Elevations  
Elevation 636.55'

Description of the Control's Location --

A "GPS" monument in the N parkway of Overlook Drive, just W of the intersection with Hennenmerry Lane. (Glenview) 16.59' N-ly of a PK nail in the centerline of Overlook Drive, 68.57' W-ly of a RR spike in the S face of power pole #9936, and 35.41' ESE-ly of a DHN and Cap to the S face of a power pole.

Streets in Close Proximity -- Separate street names with semi-colons  
OVERLOOK DRIVE; CLYDE STREET; HENNERBERRY LANE

Verified in 2002



1992 Vertical and Horizontal Control Markers

PIN Number of Property 10-09-414-042-0000 Station Number 30

Horizontal Control -- Illinois State Plane Coordinates  
Northing 1,964,427.128'N Easting 1,141,869.832'E

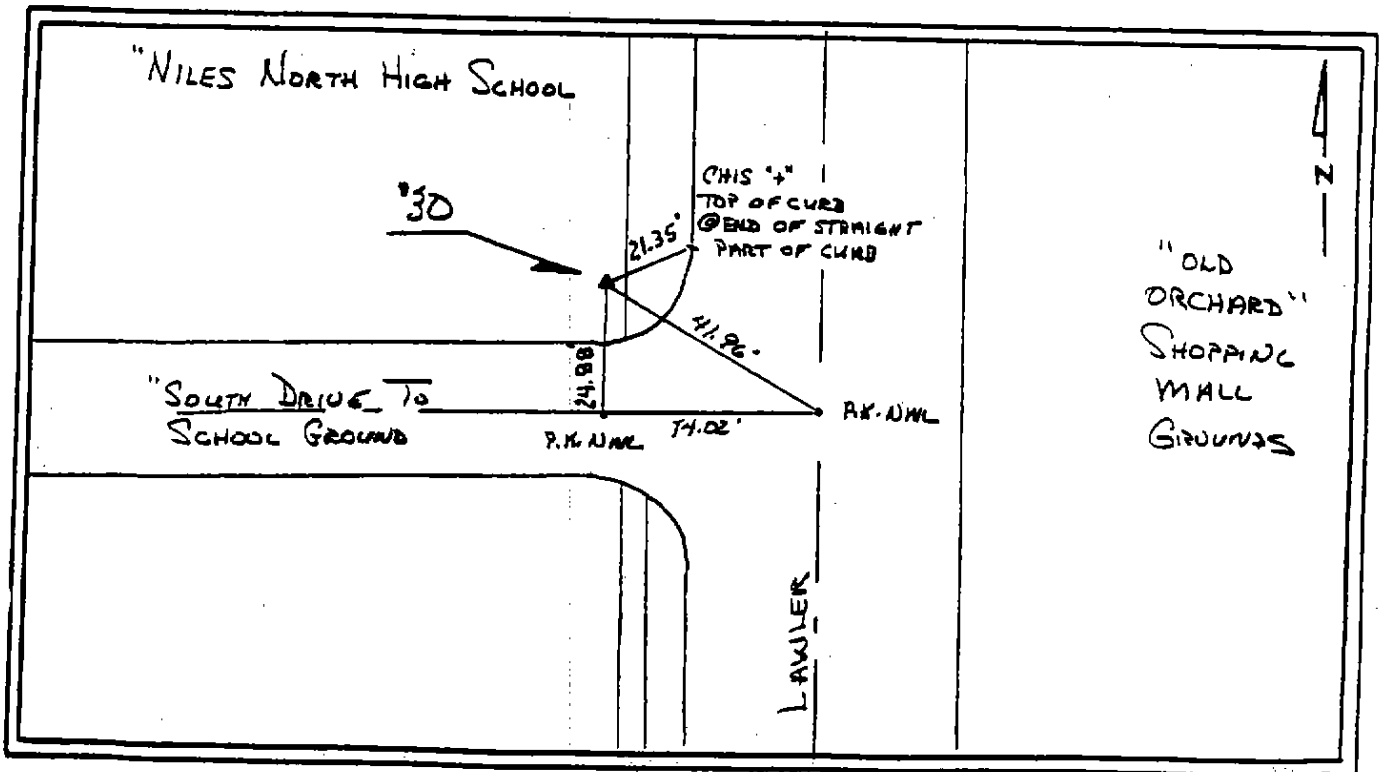
Vertical Control -- USGS Elevations  
Elevation 620.83'

Description of the Control's Location --

A #5 rebar and cap, 0.1' below ground, in the W parkway of Lawler Avenue, just N of the S driveway to Niles North High School. (Skokie) 24.88' N-ly of a PK nail in the centerline of the school's driveway, 41.96' NW-ly of a PK nail at the centerlines of the school's driveway and Lawler Avenue, and 21.35' SW-ly of a "+" cut on the top of curb, at the end of a straight section and the beginning of a curve.

Streets in Close Proximity -- Separate street names with semi-colons  
LAWLER AVENUE; GOLF ROAD; OLD ORCHARD ROAD; EDENS EXPRESSWAY

Verified in 2002



1992 Vertical and Horizontal Control Markers

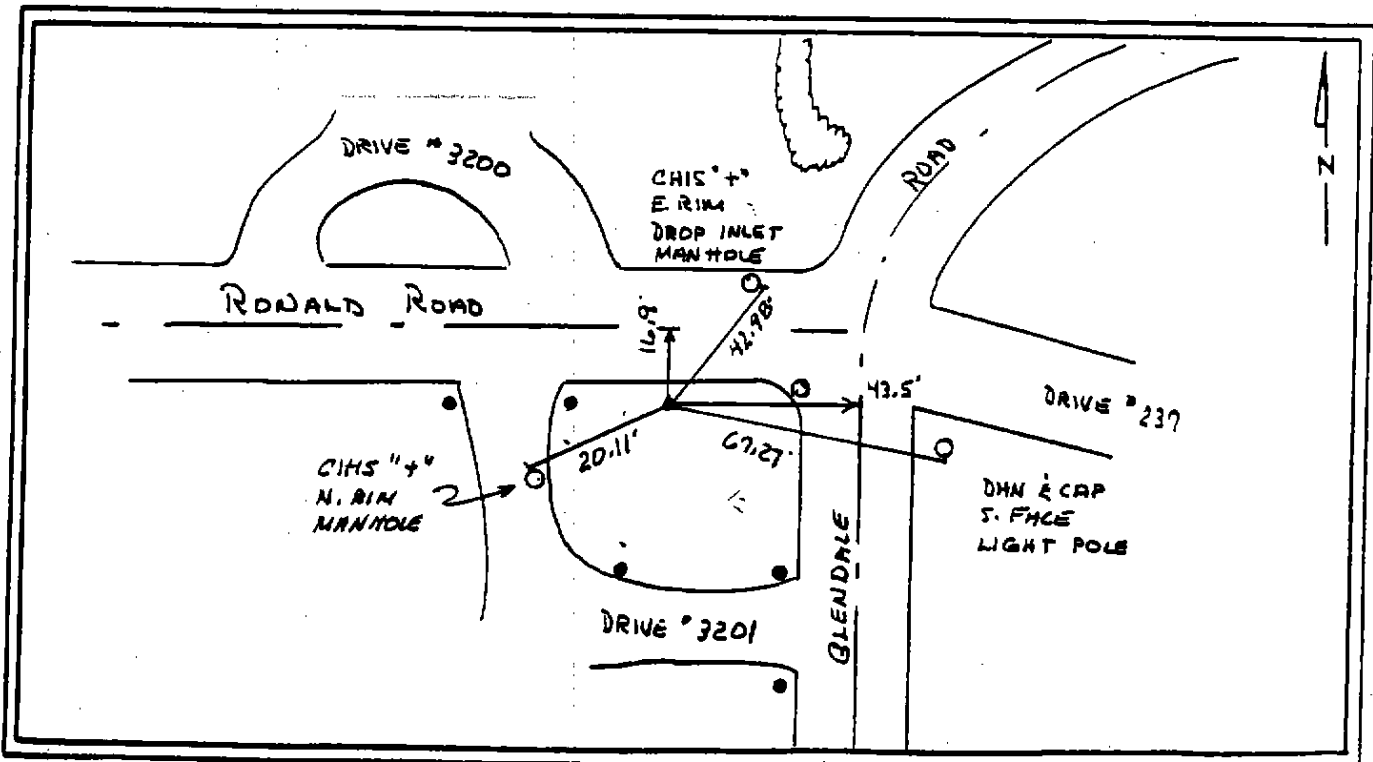
PIN Number of Property 09-11-312-016-0000 Station Number 31

Horizontal Control -- Illinois State Plane Coordinates  
Northing 1,964,719.263'N Easting 1,118,984.488'E

Vertical Control -- USGS Elevations  
Elevation 653.87'

Description of the Control's Location --  
A "GPS" monument on the S side of Ronald Road, just W of the intersection with Glendale Road. (Uninc. Cook Co.) 16.9' S-ly of the centerline of Ronald Road, 43.5' W-ly of the centerline of Glendale Road, 67.27' WNW-ly of a DHN and Cap in the S face of a light pole on the E side of Glendale Road, 20.11' NE-ly of a "+" cut on the N rim of a manhole, and 42.98' SW-ly of a "+" cut on the E rim of a drop inlet on the N side of Ronald Road.  
Streets in Close Proximity -- Separate street names with semi-colons  
RONALD ROAD; GLENDALE ROAD; MILWAUKEE AVENUE; GOLF ROAD

Verified in 2002



1992 Vertical and Horizontal Control Markers

PIN Number of Property 09-16-201-017-0000

Station Number 32

Horizontal Control -- Illinois State Plane Coordinates

Northing 1,962,386.974'N

Easting 1,110,646.286'E

Vertical Control -- USGS Elevations

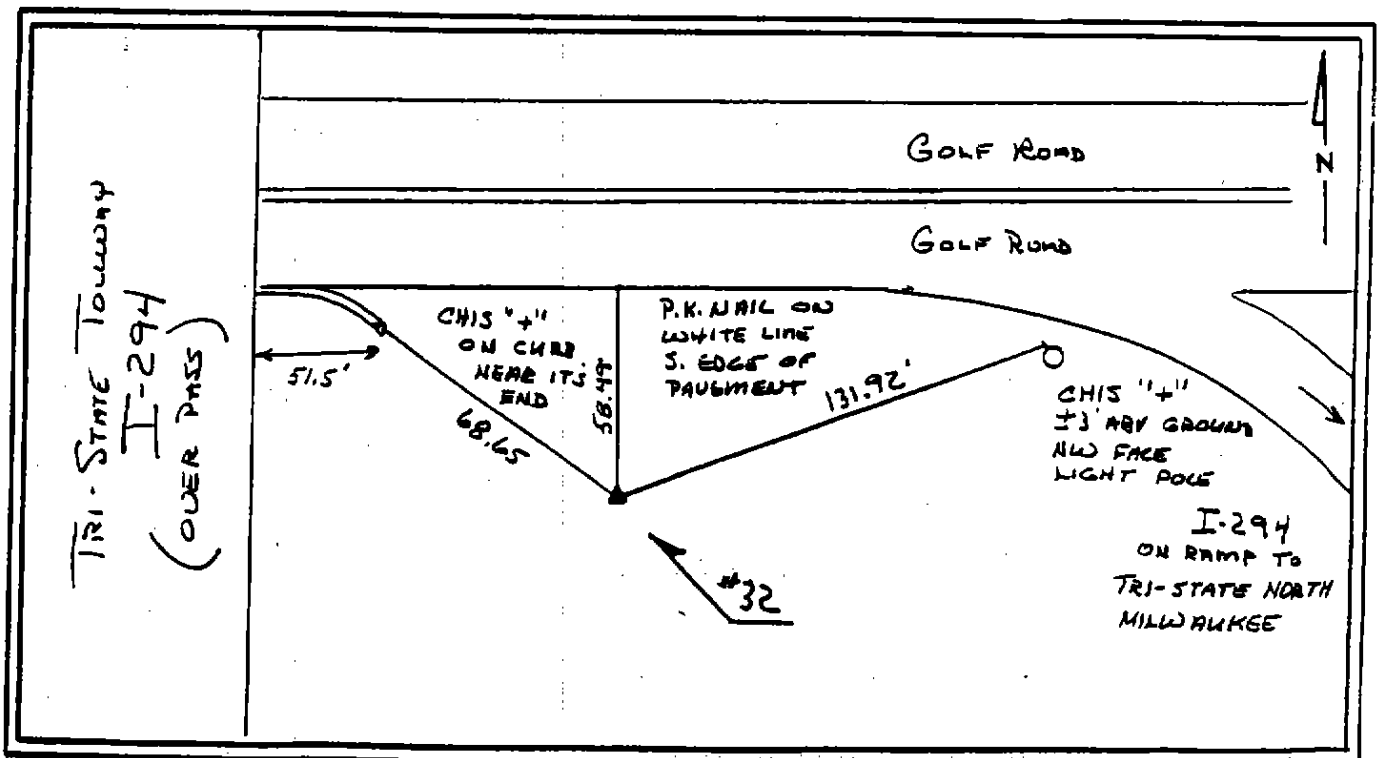
Elevation 639.96'

Description of the Control's Location --

A #5 rebar and cap, flush with the ground, on the S side of Gold, in the SE clover-leaf onto the Tri-State Tollway. (Uninc. Cook Co.) 58.49' S-ly of a PK nail on the white line at the S edge of Gold Road, 68.65' SE-ly of a "+" cut at the E end of the curb (51.5' E-ly of the interstate overpass), and 131.92' SW-ly of a "+" cut 3' above ground on the NW face of a light pole at the on-ramp to N-bound I-294.

Streets in Close Proximity -- Separate street names with semi-colons  
GOLF ROAD; TRI-STATE TOLLWAY

Verified in 2002



1992 Vertical and Horizontal Control Markers

PIN Number of Property 09-12-400-999-9999

Station Number 33

Horizontal Control -- Illinois State Plane Coordinates

Northing 1,963,221.097'N

Easting 1,125,780.084'E

Vertical Control -- USGS Elevations

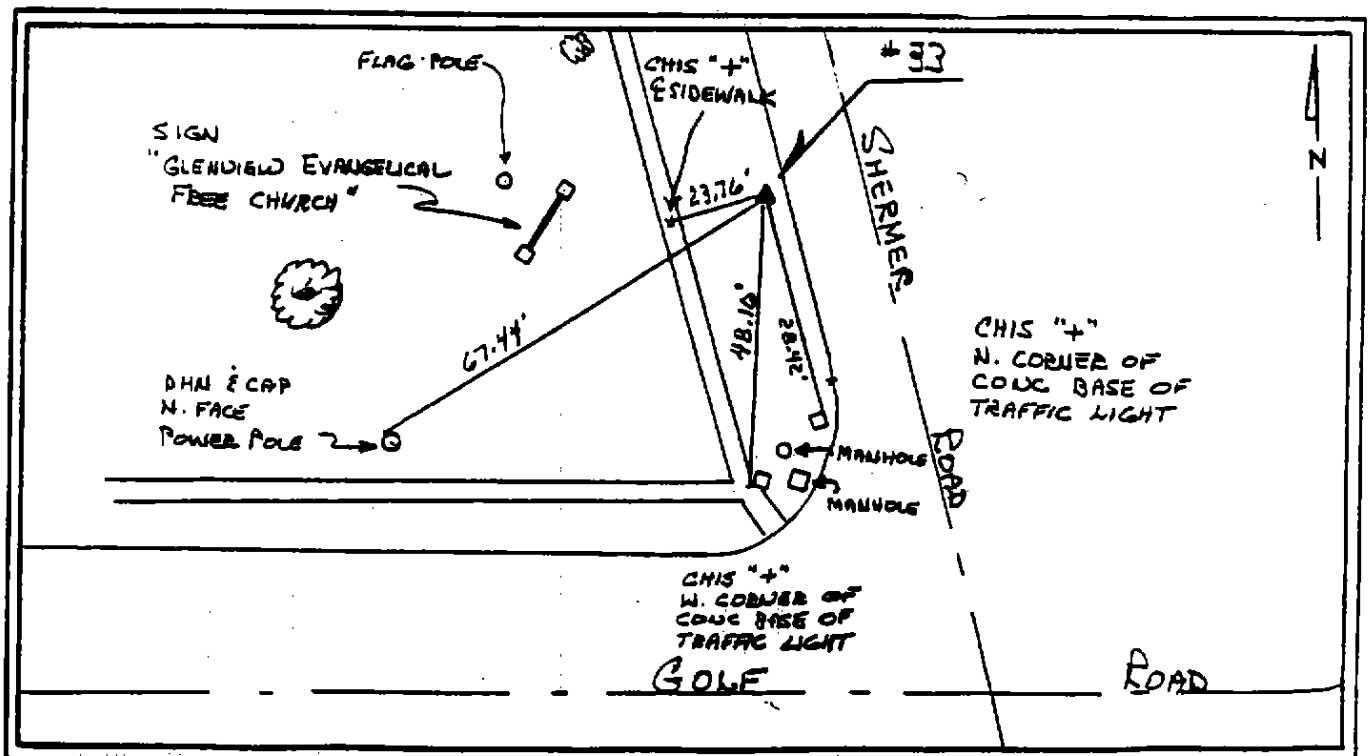
Elevation 656.79'

Description of the Control's Location --

A "GPS" monument in the W parkway of Shermer Road, just N of the intersection with Golf Road. (Glenview) 23.76' ENE-ly of a "+" cut in the centerline of the sidewalk, 67.44' NE-ly of a DHN and Cap in the N face of a power pole on Golf Road, 48.10' N-ly from a "+" cut on the W corner of the concrete base of a traffic light, and 28.42' NNW-ly of a "+" cut on the N corner of the concrete base of a traffic light.

Streets in Close Proximity -- Separate street names with semi-colons  
GOLF ROAD; SHERMER ROAD

Verified in 2002



1992 Vertical and Horizontal Control Markers

PIN Number of Property 04-34-103-042-9999

Station Number 34

Horizontal Control -- Illinois State Plane Coordinates

Northing 1,970,189.357'N

Easting 1,122,124.239'E

Vertical Control -- USGS Elevations

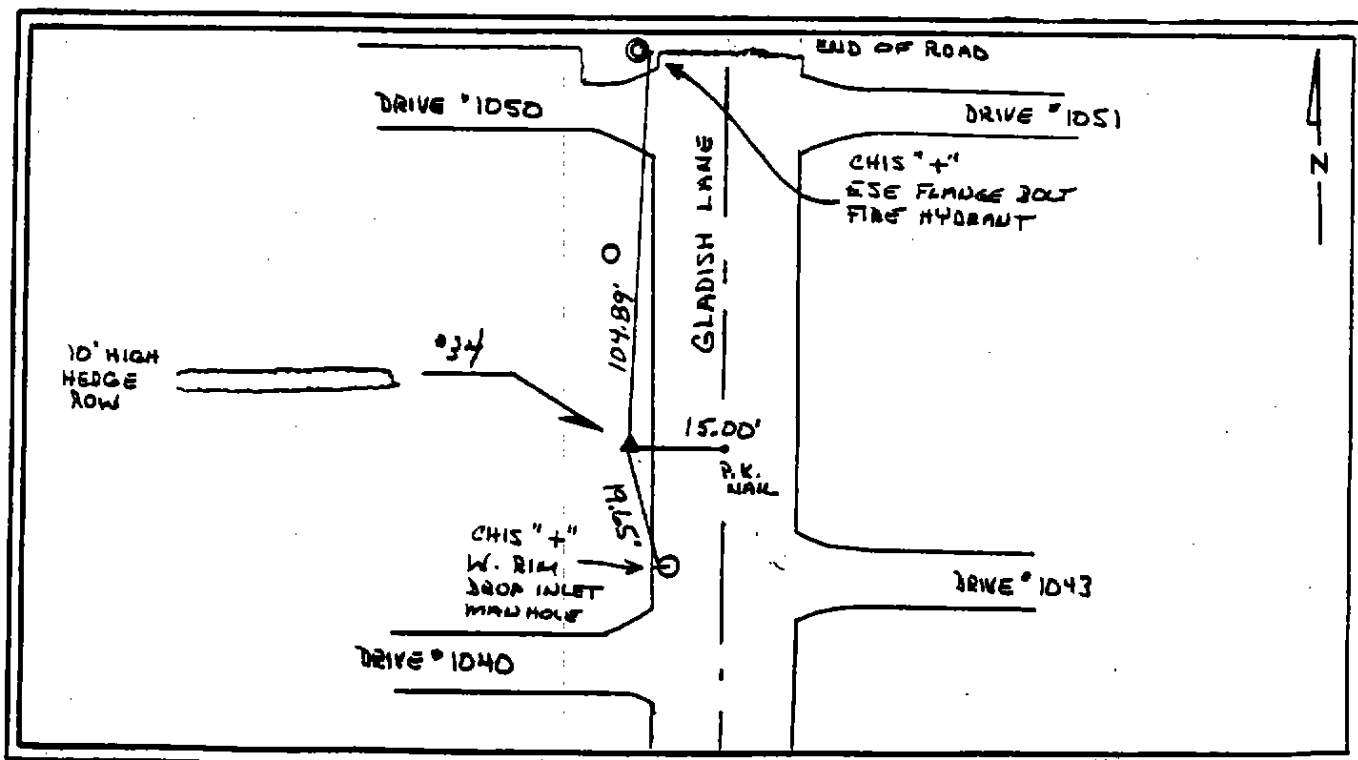
Elevation 657.64'

Description of the Control's Location --

A "GPS" monument on the W side of Gladish Lane, about 800' N of Glenview Road. (Glenview) 15.00' W-ly of a PK nail in the centerline of Gladish Lane, 19.65' NW-ly of a "+" cut on the W rim of a drop inlet manhole, and 104.89' S-ly of a "+" cut on the ESE flange bolt of a fire hydrant at the N end of Gladish Lane.

Streets in Close Proximity -- Separate street names with semi-colons  
GLADISH LANE; GLENVIEW ROAD

Verified in 2002





1992 Vertical and Horizontal Control Markers

PIN Number of Property 04-20-103-999-9999 Station Number 35

Horizontal Control -- Illinois State Plane Coordinates  
Northing 1,980,053.996'N Easting 1,111,709.863'E

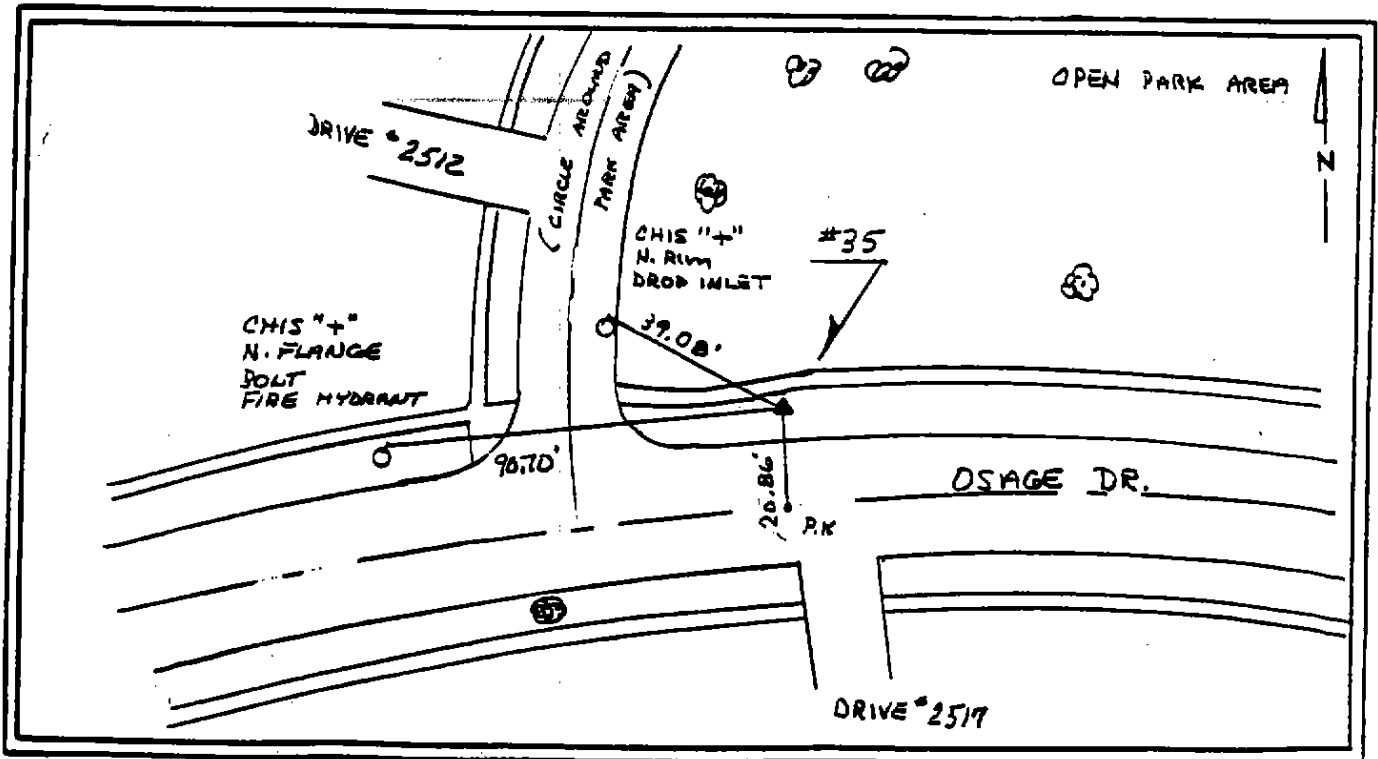
Vertical Control -- USGS Elevations  
Elevation 673.73'

Description of the Control's Location --

A "GPS" monument in the northern parkway of Osage Drive. Between the sidewalk and the back of curb, on a line extended north from the west edge of the driveway for 2517 Osage Drive. (Uninc. Cook Co.) 20.86' N-ly of a PK nail in the centerline of Osage, 90.70' E-ly of a "+" cut in the N flange bolt of a hydrant, and 39.08 SE-ly of a "+" cut in the N rim of a drop inlet

Streets in Close Proximity -- Separate street names with semi-colons  
OSAGE DRIVE

Verified in 2002



1992 Vertical and Horizontal Control Markers

PIN Number of Property 04-23-200-041-0000 Station Number 50

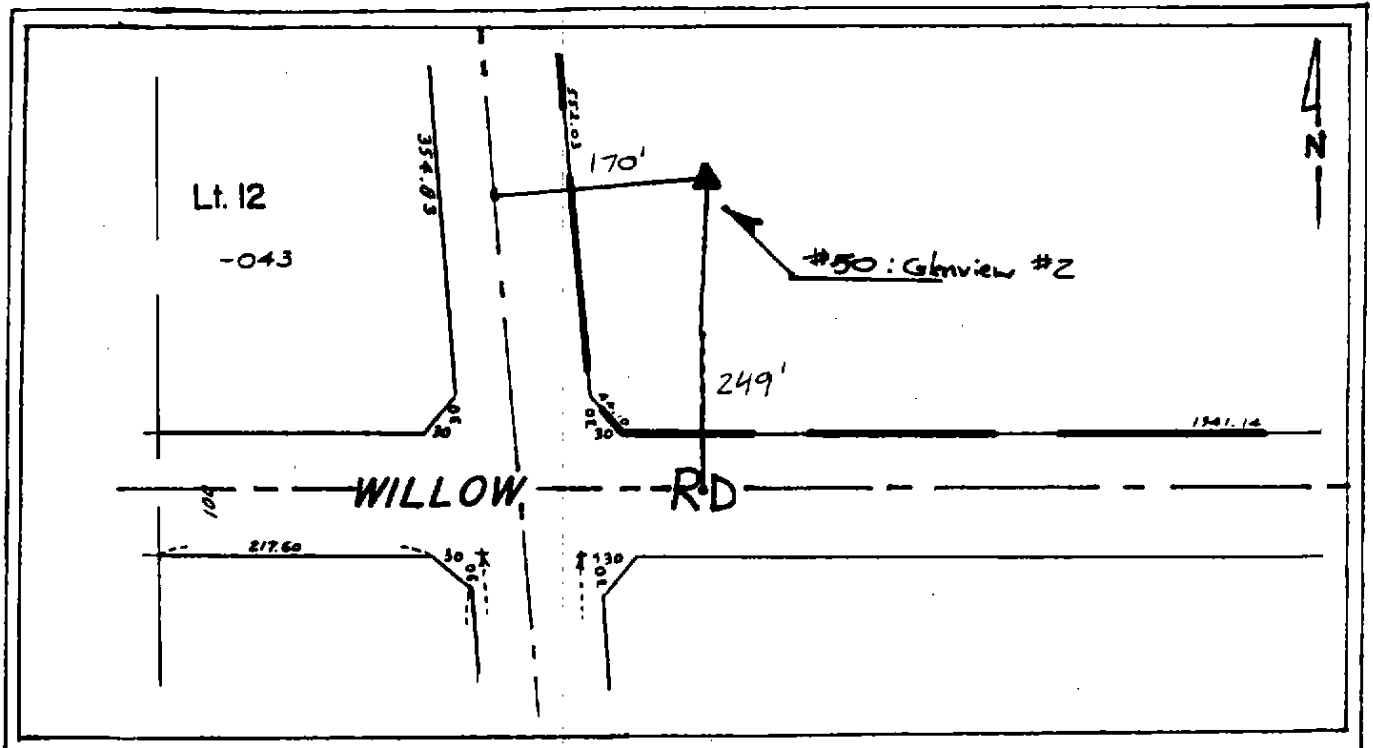
Horizontal Control -- Illinois State Plane Coordinates  
Northing 1,981,707.280'N Easting 1,129,303.092'E

Vertical Control -- USGS Elevations  
Elevation 669.70'

Description of the Control's Location --  
NGS "Glenview 2", as reset by I.D.O.T. 200' N and 50' E from NGS  
"Glenview". (Northfield) NGS "Glenview 2" is 170' E of the  
centerline of Waukegan Road and 249' N of the centerline of  
Willow Road.

Streets in Close Proximity -- Separate street names with semi-colons  
WILLOW ROAD; WAUKEGAN ROAD

Verified in 2002



STATION: 0054

# 2002 HORIZONTAL CONTROL DATA

## **AYRES** ASSOCIATES

Madison, WI 53704-3192, (608)249-0471

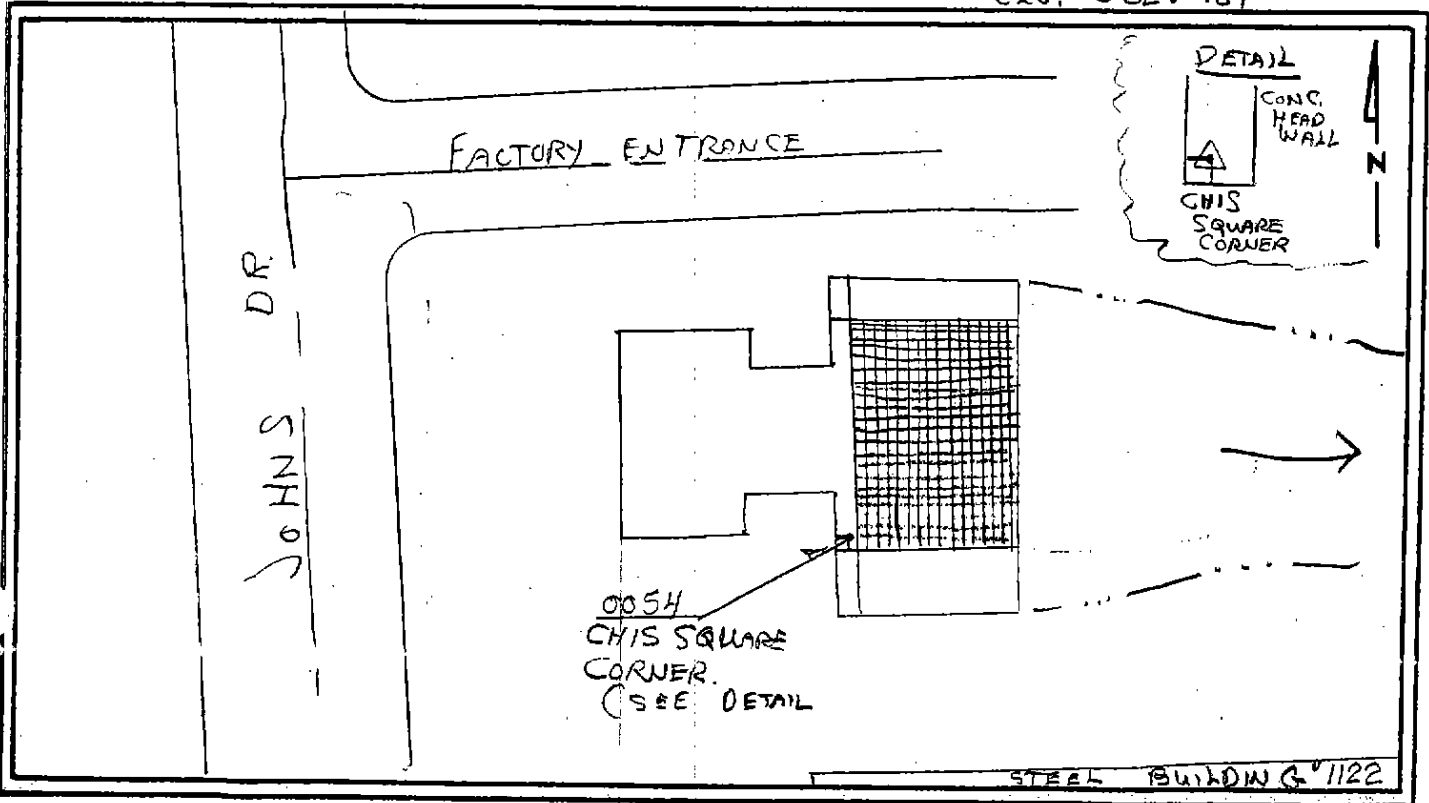
PROJECT : GLENVIEW ILLINOIS 2002      NO. 723.00      STATION : 54  
GPS 2ND ORDER TRAVERSE      STATE : ILLINOIS  
TYPE OF MARK : CHIS SQ. ON DAM      YEAR SET : 2002      COUNTY : COOK  
ILLINOIS 1983 SYSTEM OF PLANE COORDINATES      ILLINOIS EAST Zone  
COMBINATION FACTOR : 0.99996795      QUADRANGLE : PARK RIDGE  
NORTHING : 1,977,491.800'      EASTING : 1,125,216.223'      ANGLE : 0-20-53

To Station      North Azimuth      Bearing      Grid Distance

---

LOCALITY: IN "GLENVIEW ILL." ABOUT 0.2 MILE WEST OF THE NE-27,  
T42N, R12E.  
THE STATION IS THE CHIS. CORNER OF THE SQUARE  
CUT INTO THE HEADWALL (NE CORNER OF SQ.)

CU. 632.981



STATION: 0055

# 2002 HORIZONTAL CONTROL DATA

# AVRES

ASSOCIATES

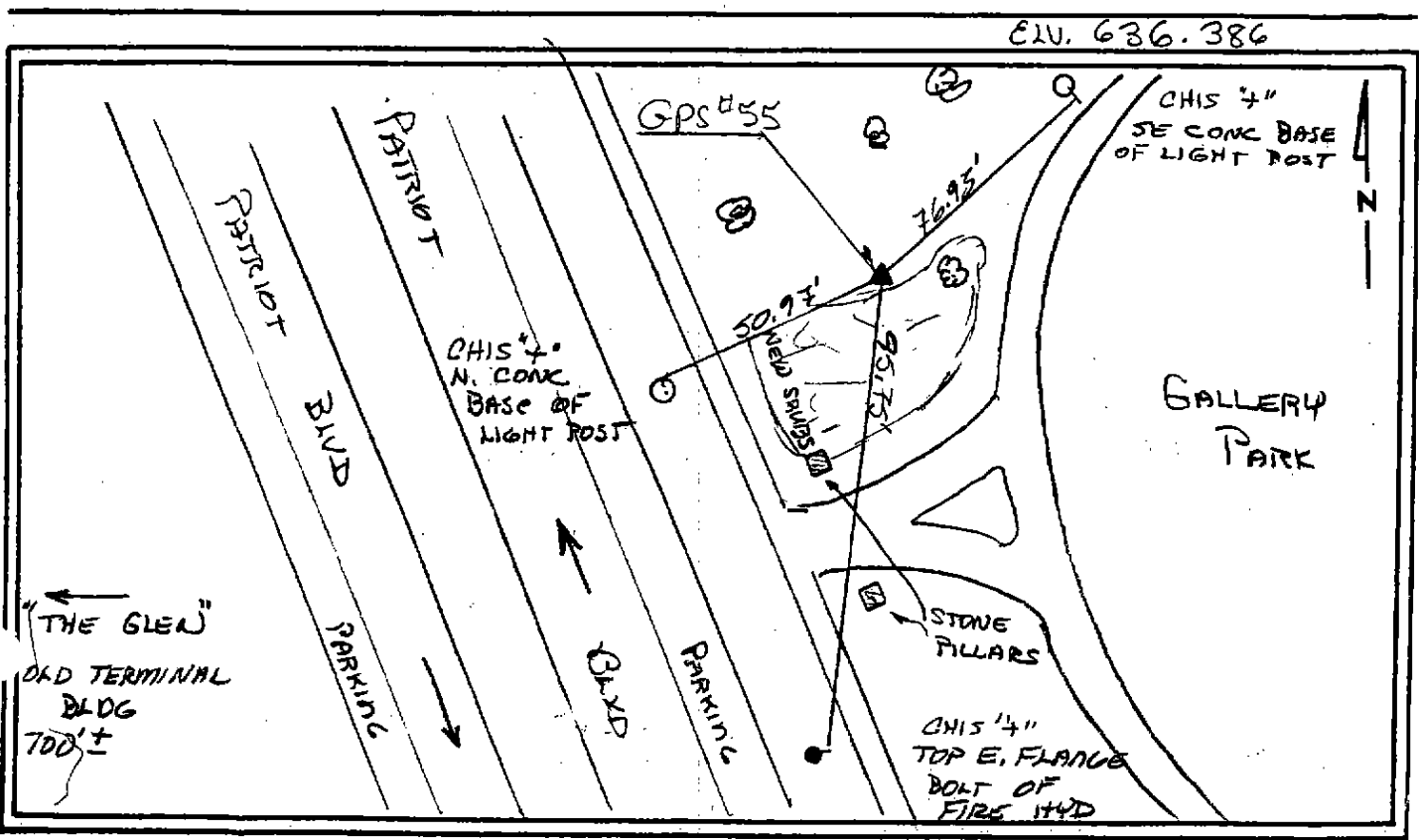
Madison, WI 53704-3192, (608)249-0471

PROJECT : GLENVIEW ILLINOIS 2002	NO. 723.00	STATION : 55
GPS 2ND ORDER TRAVERSE		STATE : ILLINOIS
TYPE OF MARK : BERNSTEN GPS 3D MON.	YEAR SET : 2002	COUNTY : COOK
ILLINOIS 1983 SYSTEM OF PLANE COORDINATES		ILLINOIS EAST Zone
COMBINATION FACTOR : 0.99996795		QUADRANGLE : PARK RIDGE
NORTHING : 1,975,989.431'	EASTING : 1,122,689.604'	ANGLE : 0-20-31

To Station	North Azimuth	Bearing	Grid Distance
------------	---------------	---------	---------------

---

LOCALITY: IN "GLENVIEW ILL." ABOUT 0.25 MILE NORTH AND 0.1 MILE WEST OF THE CTR. 27 THEN RIZE.



2002 HORIZONTAL CONTROL DATA

**AYRES**  
ASSOCIATES

Madison, WI 53704-3192, (608)249-0471

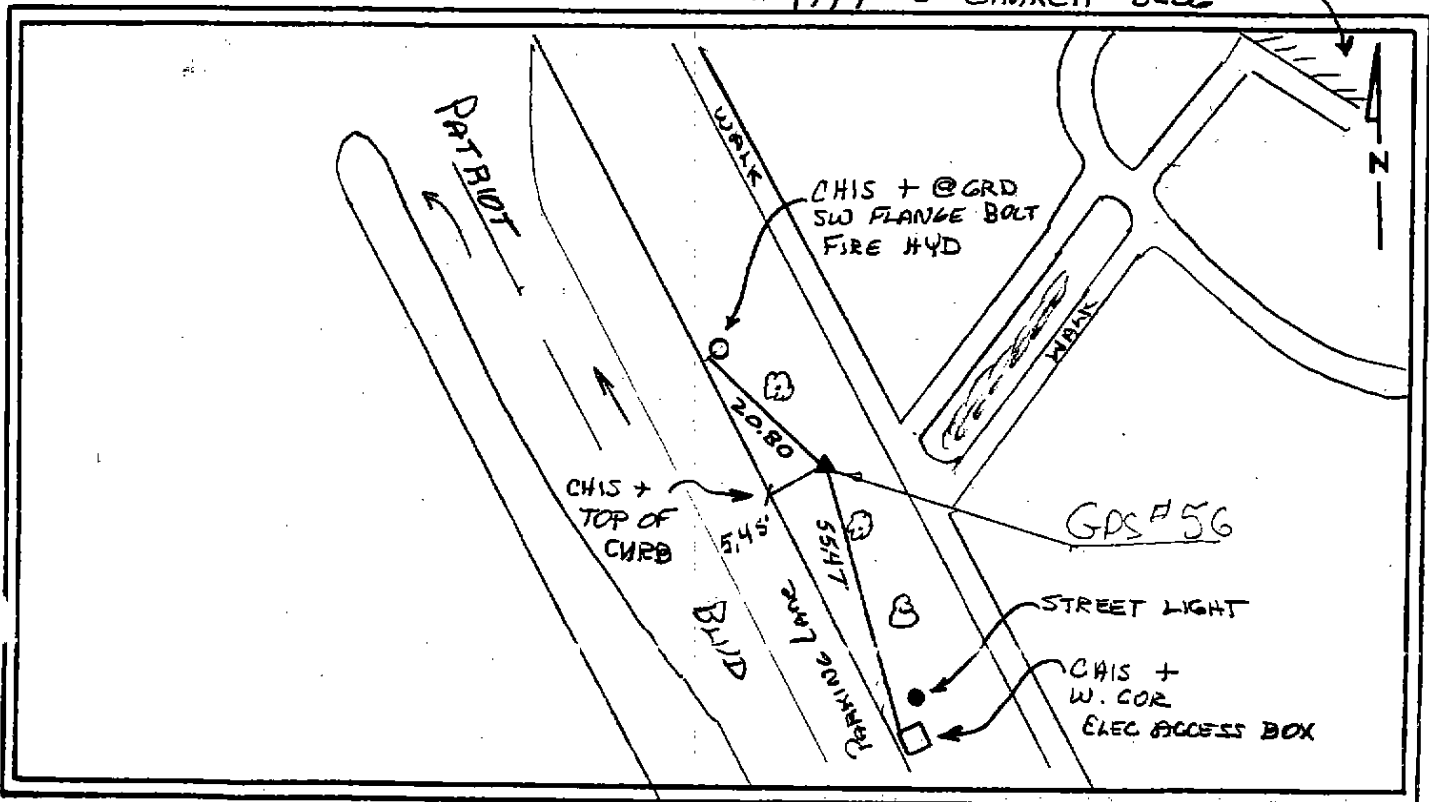
PROJECT : GLENVIEW ILLINOIS 2002      NO. 723.00      STATION : 56  
 GPS 2ND ORDER TRAVERSE      STATE : ILLINOIS  
 TYPE OF MARK : BERNSTEN GPS 3D MON.      YEAR SET : 2002      COUNTY : COOK  
 ILLINOIS 1983 SYSTEM OF PLANE COORDINATES      ILLINOIS EAST Zone  
 COMBINATION FACTOR : 0.99996795      QUADRANGLE : PARK RIDGE  
 NORTHING : 1,974,508.538'      EASTING : 1,123,259.926'      ANGLE : 0-20-36

To Station      North Azimuth      Bearing      Grid Distance

LOCALITY: ABOUT 300 FT SW OF THE CTR. 27, T42N, R12E  
ABOUT 200' SOUTH FROM "CHESTNUT AVE"

ELV. 638.430

#1799 = CHURCH BLDG



2002 HORIZONTAL CONTROL DATA

**AYRES**  
ASSOCIATES

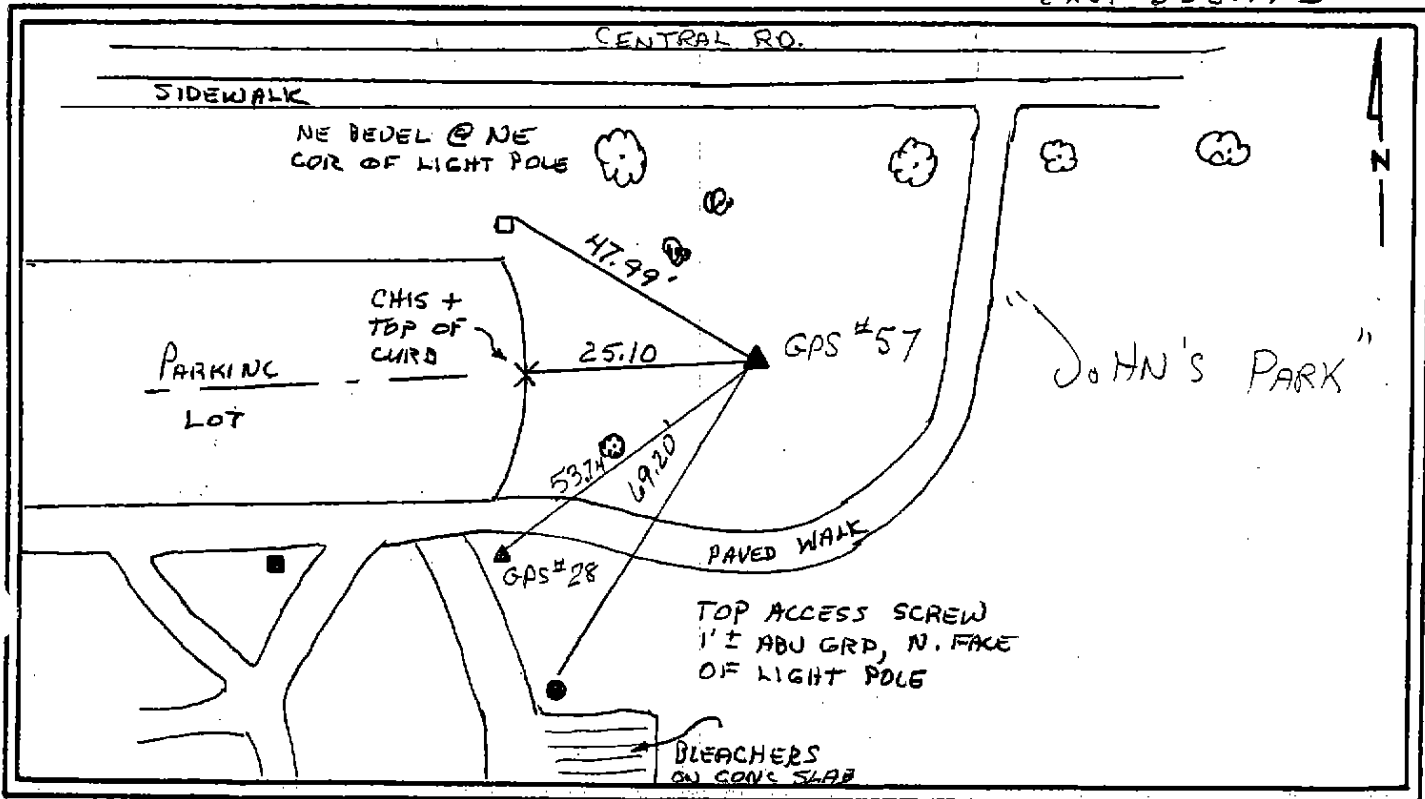
Madison, WI 53704-3192, (608)249-0471

PROJECT : GLENVIEW ILLINOIS 2002      NO. 723.00      STATION : 57  
 GPS 2ND ORDER TRAVERSE      STATE : ILLINOIS  
 TYPE OF MARK : BERNSTEN GPS 3D MON.      YEAR SET : 2002      COUNTY : COOK  
 ILLINOIS 1983 SYSTEM OF PLANE COORDINATES      ILLINOIS EAST Zone  
 COMBINATION FACTOR : 0.99996795      QUADRANGLE : PARK RIDGE  
 NORTHING : 1,966,838.398'      EASTING : 1,126,689.021'      ANGLE : 0-21-05

To Station      North Azimuth      Bearing      Grid Distance

LOCALITY: IN "GLENVIEW ILL." ABOUT 800 FT. WEST OF THE NW-12  
T41N, R12E.

ELU. 638.173



2002 HORIZONTAL CONTROL DATA

**AYRES**  
ASSOCIATES

Madison, WI 53704-3192, (608)249-0471

PROJECT : GLENVIEW ILLINOIS 2002	NO. 723.00	STATION : 58
GPS 2ND ORDER TRAVERSE		STATE : ILLINOIS
TYPE OF MARK : BERNSTEN GPS 3D MON.	YEAR SET : 2002	COUNTY : COOK
ILLINOIS 1983 SYSTEM OF PLANE COORDINATES		ILLINOIS EAST Zone
COMBINATION FACTOR : 0.99996795		QUADRANGLE : ARLINGTON HEIGHTS
NORTHING : 1,975,010.018'	EASTING : 1,108,230.047'	ANGLE : 0-18-22

To Station	North Azimuth	Bearing	Grid Distance
------------	---------------	---------	---------------

LOCALITY: IN UNINCORPORATED COOK CO. IN THE TIMBER TRAIL  
SUB DIVISION. ABOUT 0.3 MILE WEST AND 200 FT. SOUTH OF  
THE NW-30, T 42N, R 12E

CLU. 643.911

