

STOP THE HOLDING TRACK!



In 2016, the Illinois Department of Transportation (IDOT) in conjunction with the Wisconsin Department of Transportation (WisDOT) and the Federal Railroad Administration (FRA) announced a plan to increase daily trips on the Amtrak Hiawatha line between Chicago and Milwaukee, from 14 to 20 trips.

Their plan includes a proposal to build a new **2-mile long freight train holding track** to facilitate the flow of freight trains in and out of nearby freight yards.

Do you want to see idling freight trains parked in the middle of Glenview? This proposed holding track would run through the heart of Glenview and would have **significant impacts on the health and safety of our community.**

What you NEED to know

- **The holding track would allow freight to park and sit idling for hours on end.** This would result in significant delays at the West Lake Ave. crossing, when trains slow down to stop or creep forward out of the holding track. This is a main route to Glenbrook Hospital and Glenbrook South High School, which poses significant safety concerns and unnecessary delays for emergency medical services and for parents and students.
- **Stopping and idling freight trains would cause health and environmental damage to our community.** Freight trains stopping, starting and sitting idle on the holding track near highly populated residential areas raises serious concerns about diesel exhaust, drastically increased noise and a semi-permanent wall of graffiti-laden rail cars. Massive trains carrying crude oil, coal and other hazardous materials could be frequently held in our area.

- **This project benefits Wisconsin, but we would be paying for it.** The holding track would use \$231 million of taxpayer money to benefit Foxconn and companies north of the border. Meanwhile, our communities pay the price of traffic snarls, noise, air pollution, and decreased property values.
- **In addition to the holding track, the plan calls for the installation of universal crossover switches south of Dewes Street in Downtown Glenview to accommodate the flow of freight and passenger rail.** These switches would be extremely loud and disruptive for the surrounding residential area and would cause an increase in traffic build up at downtown crossings.
- **Amtrak trains will cause greater traffic delays on impacted roads in downtown Glenview.** A simple solution is to move the stop to the Glen of North Glenview train station.

The problem

NONE of the health, safety and environmental impacts of the proposed freight train holding track were addressed in the Environmental Assessment (EA) document IDOT, WisDOT and FRA presented in 2016.

Why spend \$231 million on a band-aid solution? There are viable alternatives to this holding track—like fully separating freight and passenger rail lines to eliminate rail congestion.

Take action

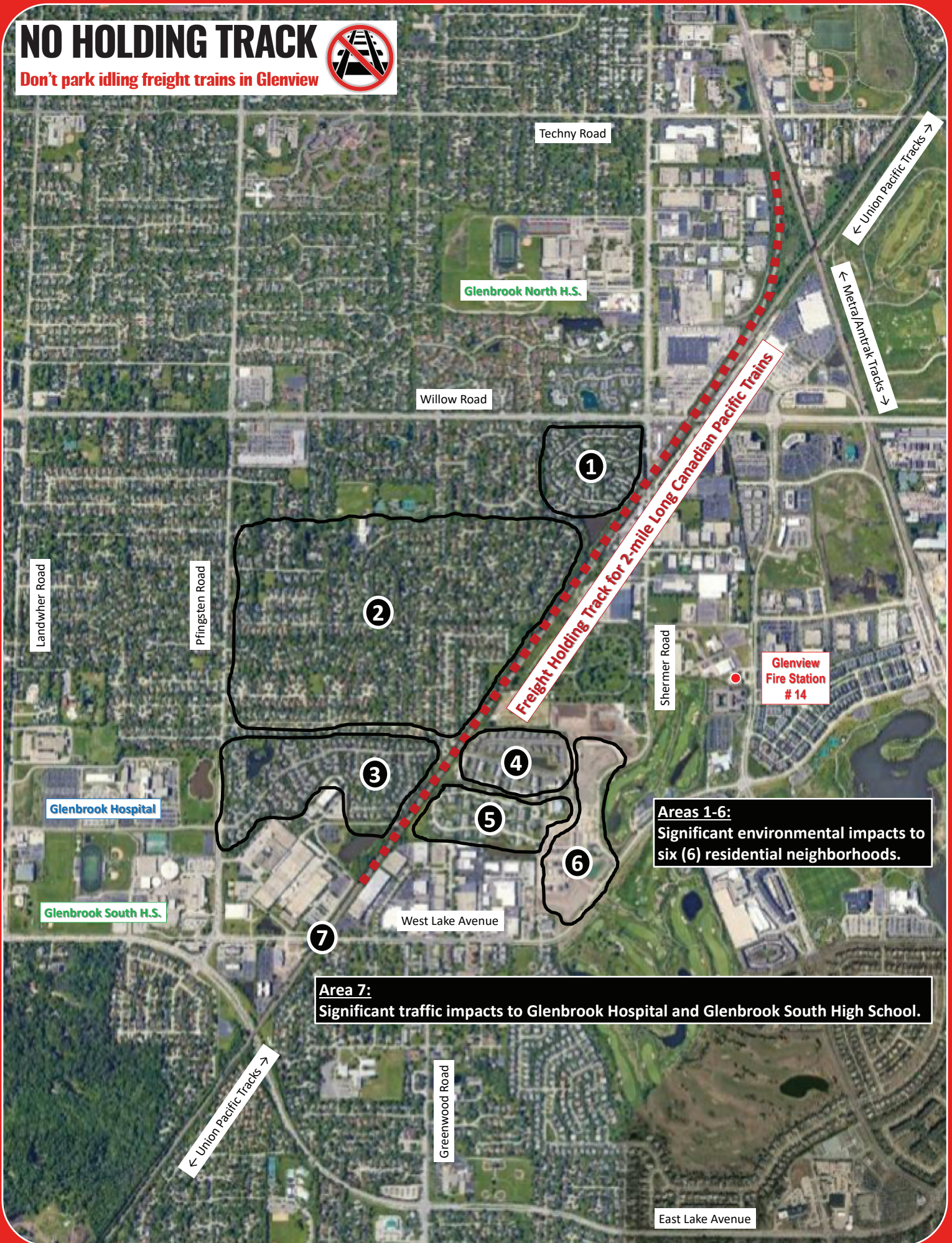
We DEMAND that our state officials fully evaluate the health, safety and environmental impacts of the holding track. We EXPECT them to fully evaluate alternatives—especially when there are solutions with less impact on our communities that would be better long-term solutions for Illinois.

We need your help! Tell Governor Rauner to STOP the holding track.

Learn more and take action at NoHoldingTrack.com

NO HOLDING TRACK

Don't park idling freight trains in Glenview



Freight Holding Track for 2-mile Long Canadian Pacific Trains

Areas 1-6:
Significant environmental impacts to six (6) residential neighborhoods.

Area 7:
Significant traffic impacts to Glenbrook Hospital and Glenbrook South High School.

Landwehr Road

Pfingsten Road

Techny Road

Glenbrook North H.S.

Willow Road

← Union Pacific Tracks →

← Metra/Amtrak Tracks →

Shermer Road

Glenview Fire Station #14

Glenbrook Hospital

Glenbrook South H.S.

West Lake Avenue

← Union Pacific Tracks →

Greenwood Road

East Lake Avenue