

Proposed Chicago – Milwaukee Intercity Passenger Rail Corridor (Amtrak's *Hiawatha Service*) Environmental Assessment (EA)



Community Development
Department



Agenda

- I. Environmental Assessment (EA) Overview**
 - A. Metra/Amtrak line - Dewes Street**
 - B. Union Pacific line – Between W. Lake and Willow**
- II. Board Resolution Objecting to EA**
- III. Next Steps**
 - A. Attend November 2 Open House**
 - B. Send in Comments**



Environmental Assessment – Amtrak Hiawatha Service

Proposal

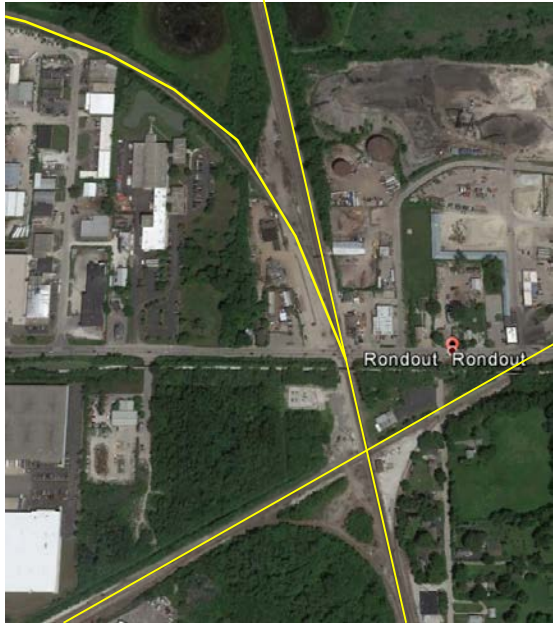
- Increase in Amtrak’s Hiawatha Service from 7 to 10 round trips (6 more one-way trips)
- Glenview impacts:
 - New track switches and crossover near Dewes Street along Metra/Amtrak line
 - New freight train holding track in UP right-of-way, located off of Metra/Amtrak line

Environmental Assessment (EA)

- Provides FRA, WisDOT, IDOT, local governments and public an understanding of impacts
- Released October 6, 2016 – official public review and comment period is now underway

EA’s Most Concerning Recommendation – Design Alternatives 1 & 2

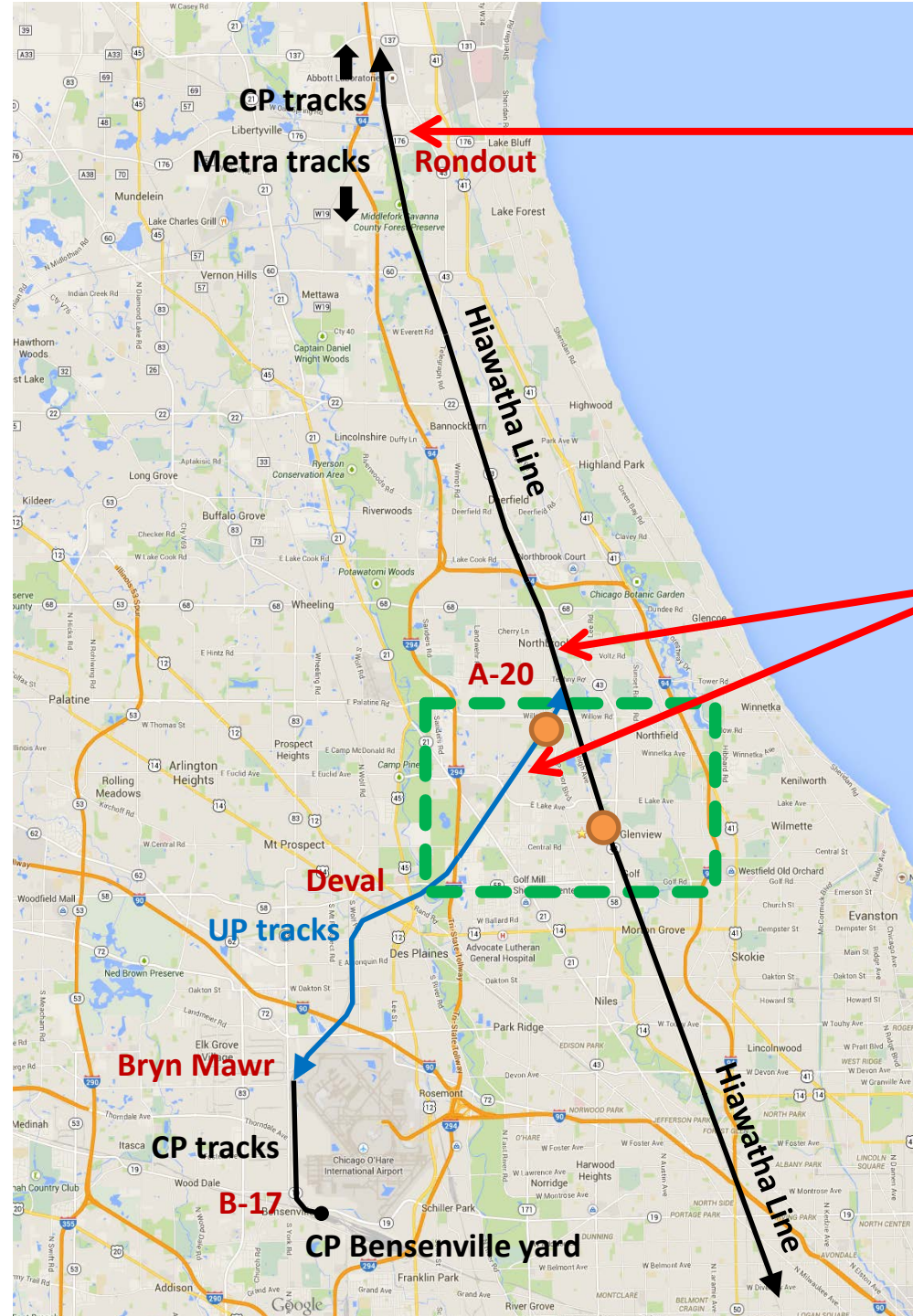
- A proposed new 10,000 foot long freight train holding track – “A-20” – along either the east or west side of the Union Pacific (UP) line adjacent to existing residential areas and the 2012 derailment site



Rondout



Deval



CP trains (~25/day) park & wait north of Rondout until UP clears them across their tracks to CP's Bensenville yard

UP Siding Extension at A-20

Proposed Design Alternative 1 (west side) or 2 (east side) would be located between Techny Rd in Northbrook and West Lake Ave in Glenview for 10,000 ft long CP trains to hold and wait until UP clears them to Bensenville yard

Track crossover

Crossing timing modifications

Linneman

Henley

Dewes

Glenview Rd



New track switches

Dewes Street – Amtrak/Metra Line - Glenview Universal Crossover

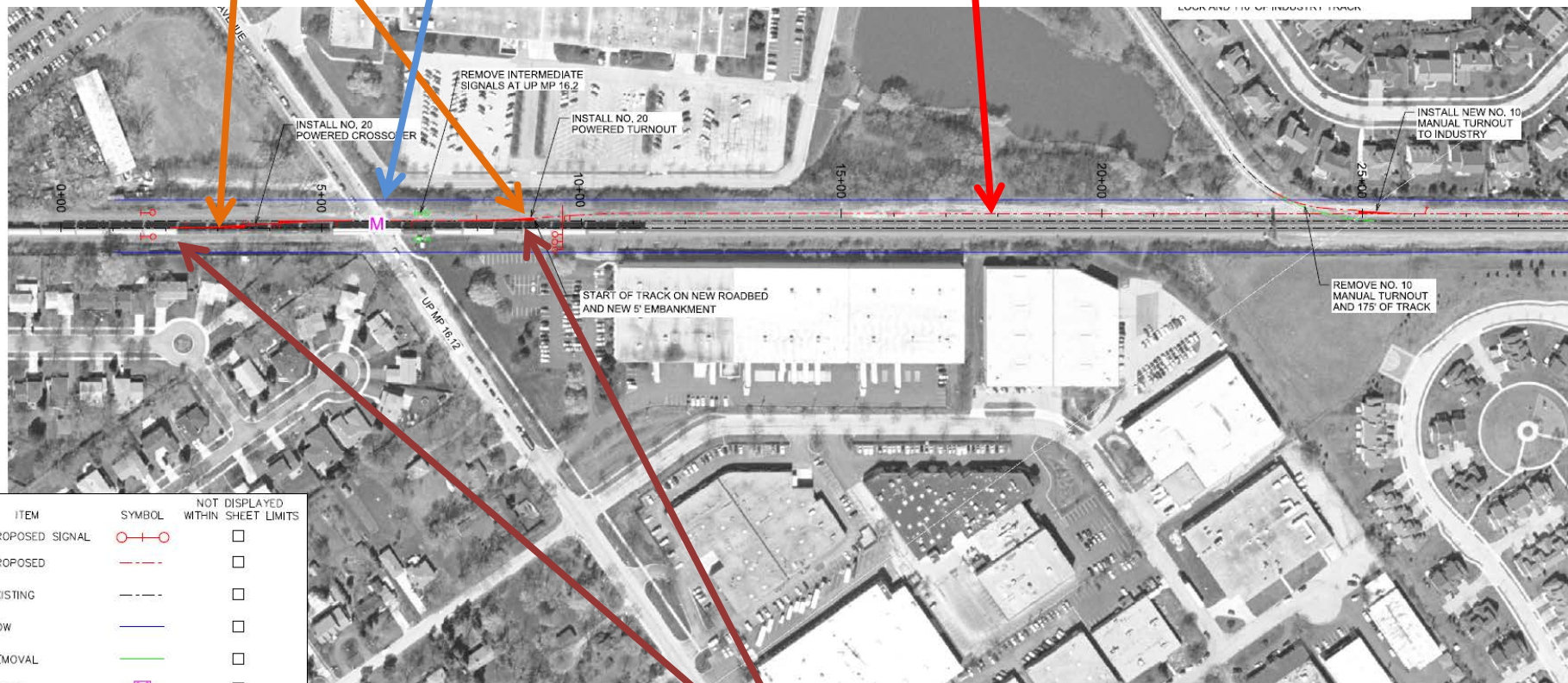
Track crossover

New track – 5ft embankment

West Lake

Crossing timing modifications

Winchester



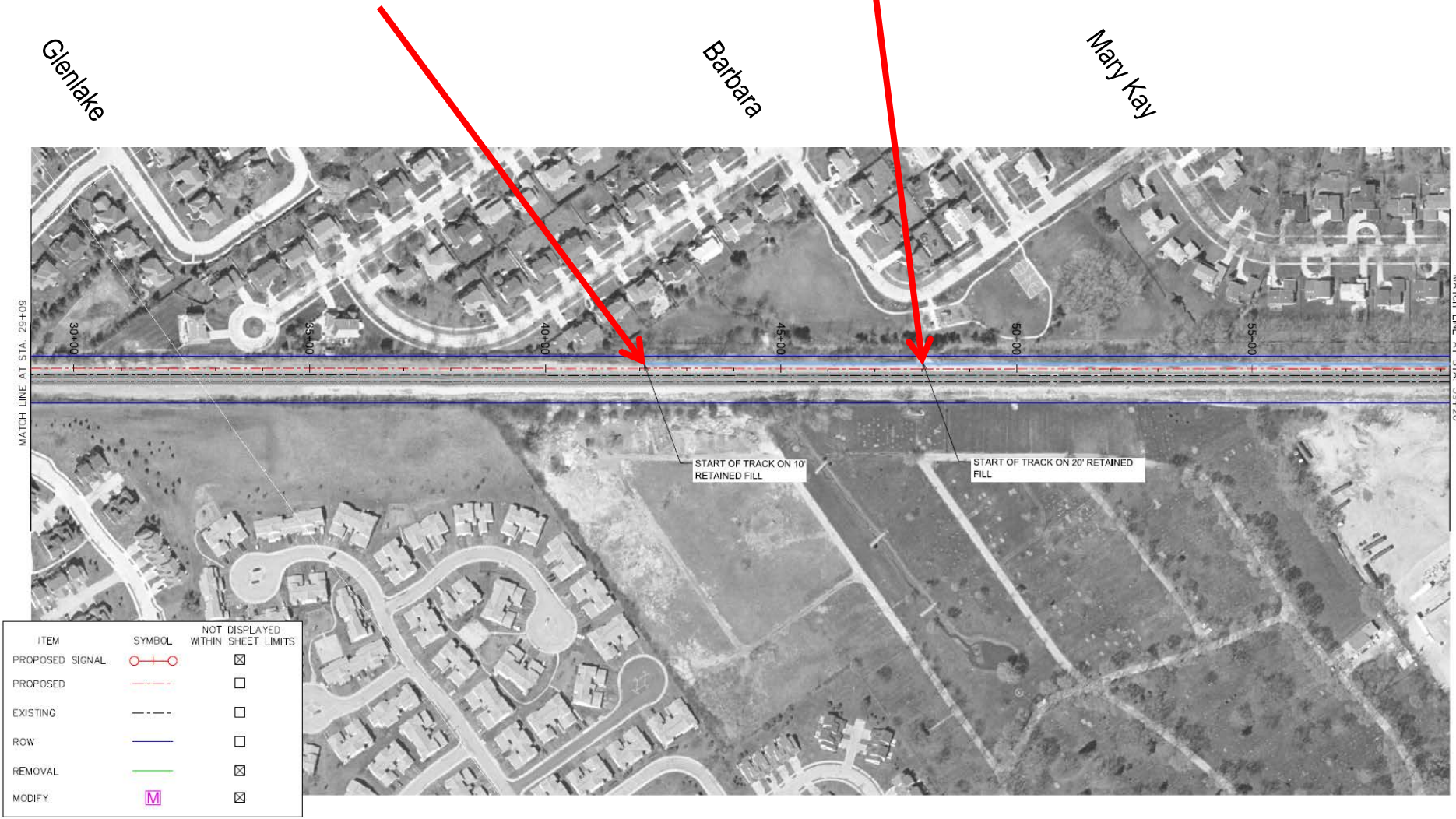
ITEM	SYMBOL	NOT DISPLAYED WITHIN SHEET LIMITS
PROPOSED SIGNAL	○—○	☐
PROPOSED	---	☐
EXISTING	---	☐
ROW	—	☐
REMOVAL	---	☐
MODIFY	M	☐

New track switches

UPRR Siding Extension A-20 – Design Alternative 1

New track – 10ft retained fill

New track – 20ft retained fill

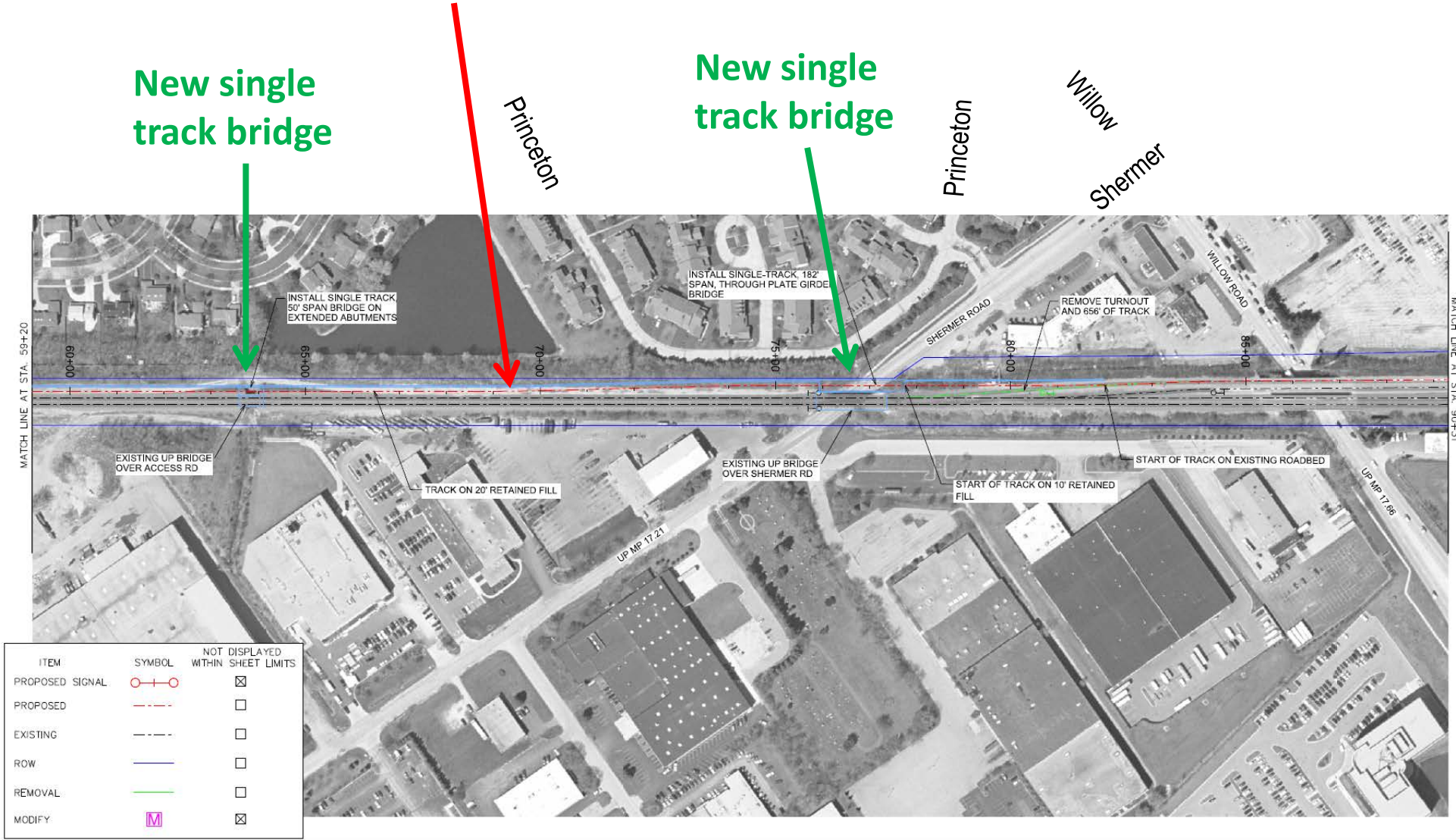


UPRR Siding Extension A-20 – Design Alternative 1

New track – 20ft retained fill

New single track bridge

New single track bridge



UPRR Siding Extension A-20 – Design Alternative 1

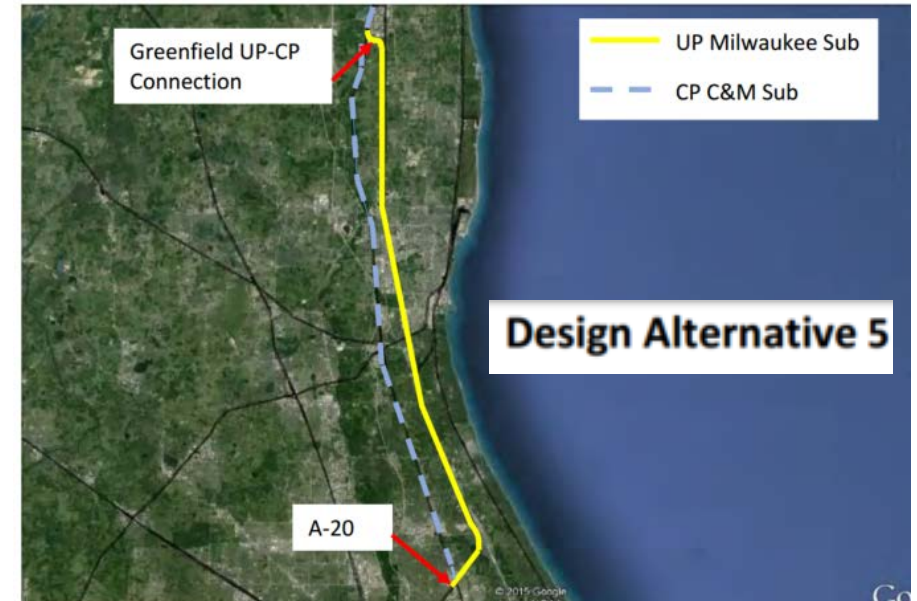
Recent Board Action

Resolution

- On October 18 Village Board passed resolution stating Village's objection to EA recommendations
- Staff sending formal objection letter with Resolution to IDOT/WisDot/FRA

Major Concerns Listed in Resolution

1. Need – data does not support Amtrak's expansion
 - Add seventh car and utilize reservation system to address perceived ridership pressures
2. Environmental Impacts – no air quality, noise, or vibration data included to confirm EA conclusions
 - A more detailed Environmental Impact Study is needed before any further action
3. "Band-Aids" Proposed – short term approach used to fix what is primarily existing private rail conflicts
 - Focus on long term solutions to separate freight and passenger rail, and increase fluidity in rail network



Next Steps

Comments

- Public review and comment period underway - comments can be submitted in-person, online, or by mail – go to www.glenview.il.us/Pages/hiawatha.aspx for background information and links to provide comments to IDOT/WisDOT/FRA.

Schedule

- October 18, 2016 – Village Board adopted Resolution formally objecting to EA
- October 26, 2016 – Village informational meeting – 7pm at Park Center
- *November 2, 2016 – IDOT/WisDOT/FRA Open House – 5pm to 8pm at Park Center*
- November 15, 2016 – public comment period ends
- Project leaders review for FONSI (Finding of No Significant Impacts), which allows project to proceed for Federal funding of final design and construction



Next Steps

November 2 Open House

- Be sure to send in your comments
 - Fill out comment form tonight – staff will collect and send to IDOT
 - Elected officials contact information available – send letters
- Help get the word out and attend the Open House:
 - Talk to your neighbors, friends, etc.
 - Use social media
- Raise awareness - yard signs available tonight

Questions / Concerns

- Staff available to answer questions
- Aerial maps of neighborhood – mark up maps with your concerns

Comment Form
Environmental Assessment
Hiawatha Service - Chicago to Milwaukee

The Illinois Department of Transportation and The Wisconsin Department of Transportation, in partnership with the Federal Railroad Administration and Amtrak, would like your comments on proposed improvements associated with the Environmental Assessment (EA) for Amtrak's Hiawatha Service from Chicago to Milwaukee.

Please place your comment forms in the box marked COMMENTS; or fax to (312) 793-1251; or fold in thirds, tape closed, place a stamp, and mail. Visit www.illinoisrail.org to view the EA and to comment.

Meeting location attended: _____

Comment/Question: _____

(Optional, Please Print)

Name _____




Affiliation _____

Address _____

City/State _____ Zip Code _____

Phone No. _____ E-Mail Address _____

Please do NOT add me to the mailing list.

Proposed Chicago – Milwaukee Intercity Passenger Rail Corridor (Amtrak's *Hiawatha Service*) Environmental Assessment (EA)



Community Development
Department

